

ABC-GLAZED CERAMICS

References and Inspirations



About us

The ABC-Klinkergruppe

We, the ABC-Klinkergruppe, are a family-owned business in the brick and tile industry located in Germany. We look back on around 130 years of experience. Our product range is based on one of humans' oldest natural building materials - the clay.

Today, our ABC-Klinkergruppe is in the fifth generation and manufactures various brick products at six locations in Germany. Our product portfolio includes facing bricks, brick strips, clay pavers, clinker roof tiles and floor ceramics.

Sustainability

We produce sustainable natural building materials as environmentally friendly as possible. For this reason, we focus on low energy consumption in production with gentle, efficient use of resources and low material consumption.

The natural slate clay of the Tecklenburger Land forms the basic material of our ABC products - a valuable, genuine natural product!

In this context, we follow the "Cradle to Cradle" concept, which ensures that all substances produced in biological and technical cycles serve for subsequent cycles. This explains the meaning of cradle to cradle. Products are managed in a closed cycle from their creation to the end of their life cycle. After their use are 100% reused for the development of the next product.

Innovation

The renaissance of bricks has shown that the brick as a building material has again successfully adapted to the new requirements and tasks of its time - that is why we are already working today on the brick products of tomorrow.



Inspirations

Glazed brick slips

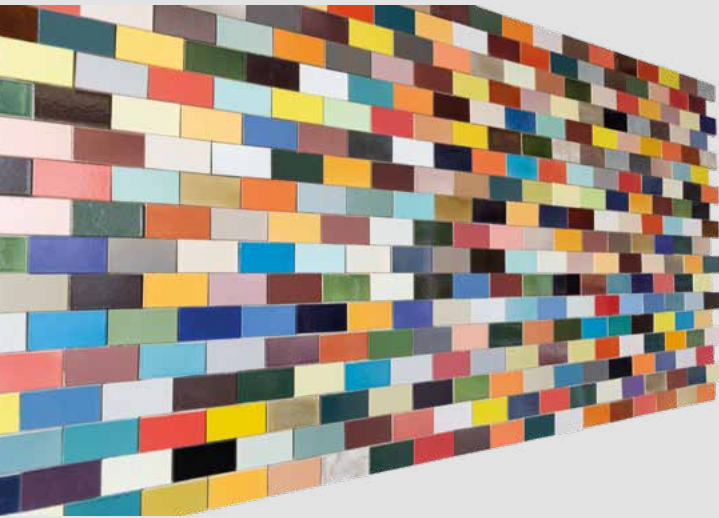
ABC-Keramik offers future-oriented, abstract brick slips and angular slips. Glazed brick slips are characterised by very intense, saturated colours - customised colours where the designer's imagination has no limits. Glazed brick slips fulfil a protective function against external factors and offer endless design possibilities. The creation of a house façade with colour-intensive brick slips provides the living environment with dynamics and energy.

Custom-made individuality

Custom-made products are part of our service. We produce glazed ceramics according to your wishes in different colours, surfaces and formats. We develop the right product for you in our laboratory.

ABC-Architects' studio

Creativity has no limits! The ABC-Architects' studio in our ceramics factory in Westerkappeln serves as a "playground" for architects. A limitless variety of glazed brick slips is offered. New ideas arise in a pleasant atmosphere.



Tower Fe Helix Groningen • NL



Owner: Geveke Bouw, Groningen
Architect: De Unie Architecten, Groningen
www.deuniearchitecten.nl
Facade: White and Green glazed
Format: 195 x 195 x 13,5 mm



Apartments Jan van Foreeststraat Utrecht • NL



Owner: MidNed Projectontwikkeling, Utrecht
www.midned.nl

Architect: StrandNL architectuur, Utrecht
www.strandnl.nl

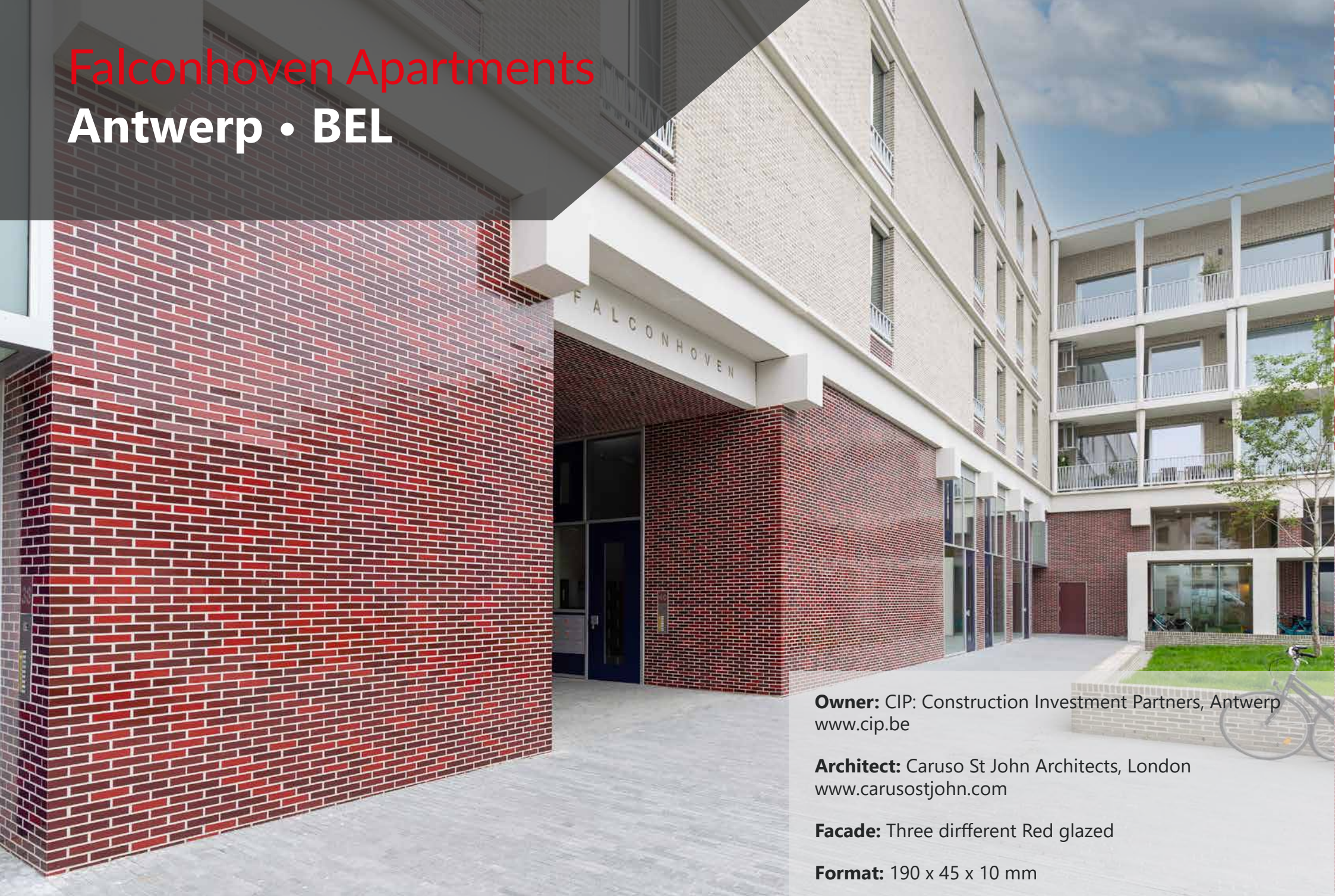
Facade: Signalblack and Green-grey glazed

Format: 240 x 71 x 10 mm



Falconhoven Apartments

Antwerp • BEL

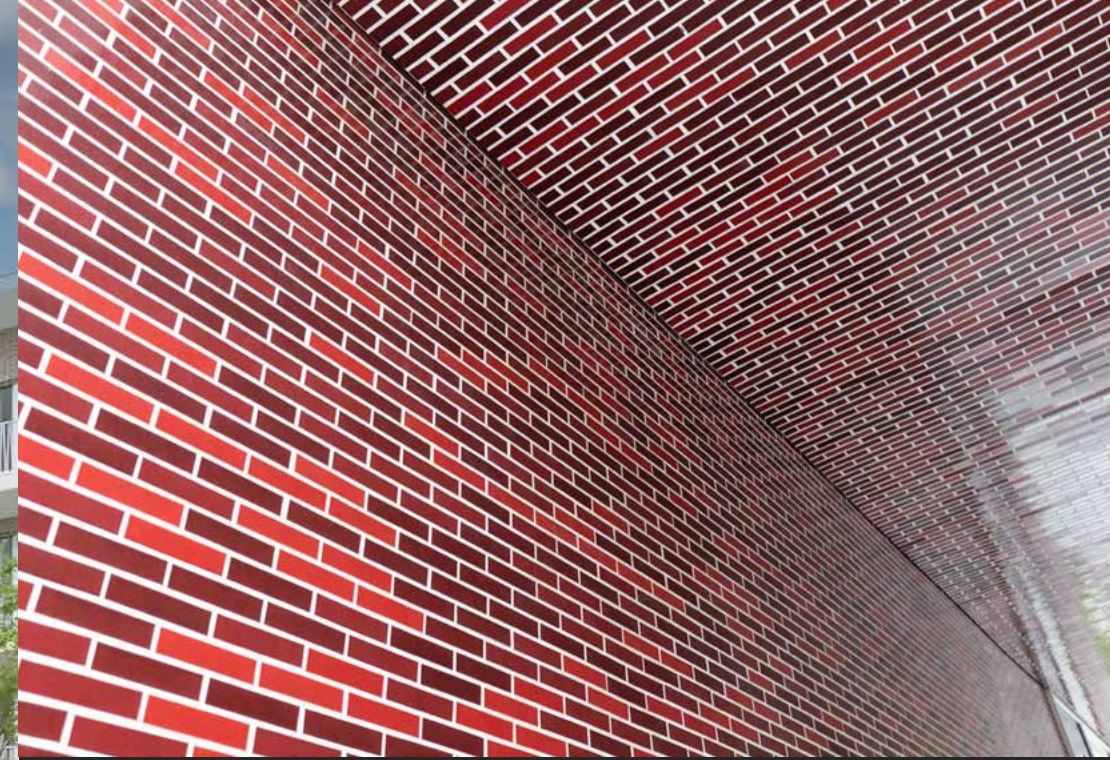


Owner: CIP: Construction Investment Partners, Antwerp
www.cip.be

Architect: Caruso St John Architects, London
www.carusostjohn.com

Facade: Three different Red glazed

Format: 190 x 45 x 10 mm



Bayerische Hausbau Apartments Munich • DE



Owner: Bayerische Hausbau, München
www.hausbau.de

Architect: Caruso St John Architects, London
www.carusostjohn.com

Facade: Aubergine glazed

Format: 240 x 71 x 10 mm

Photo: Fotoatelier Bernhard



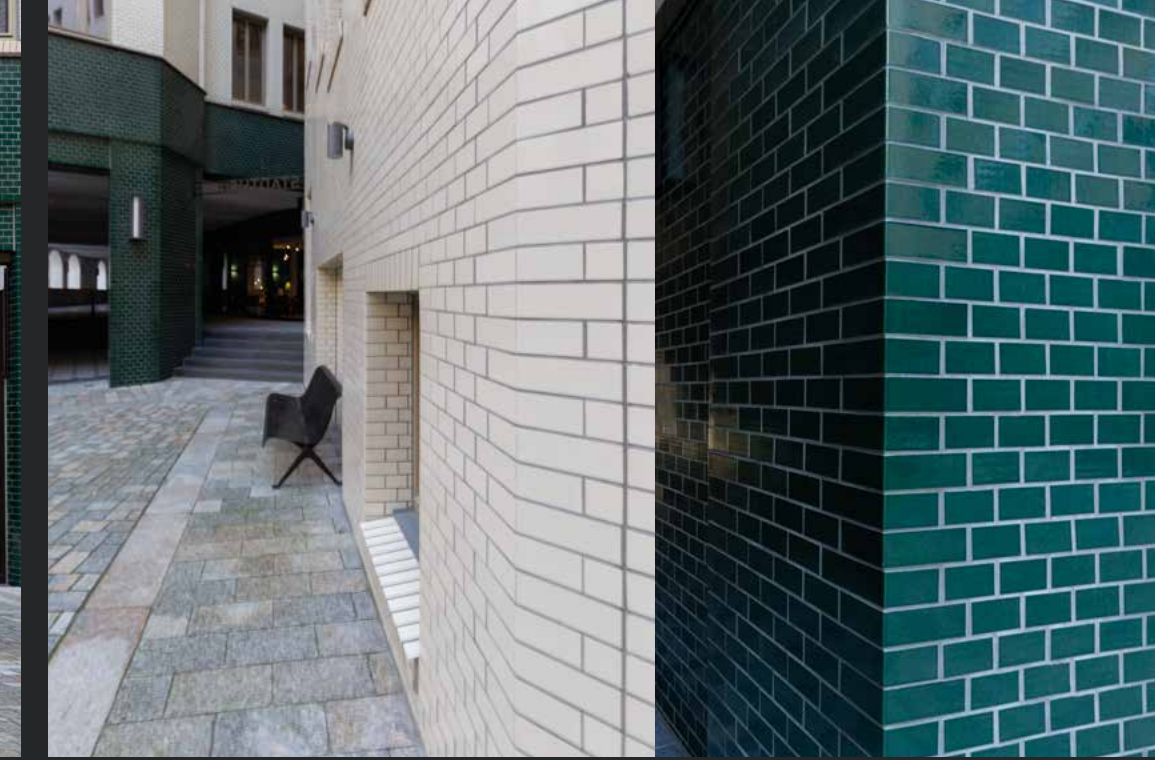
City Courtyards Hamburg • DE



Architect: David Chipperfield Architects, London
www.davidchipperfield.com

Owner: Quantum Immobilien AG, Hamburg

Facade: Slit tiles 122 x 69 x 10 mm, light-beige 14/666
and 122 x 69 x 14 mm green lightly black nuanced



ELB GYM
Hamburg • DE



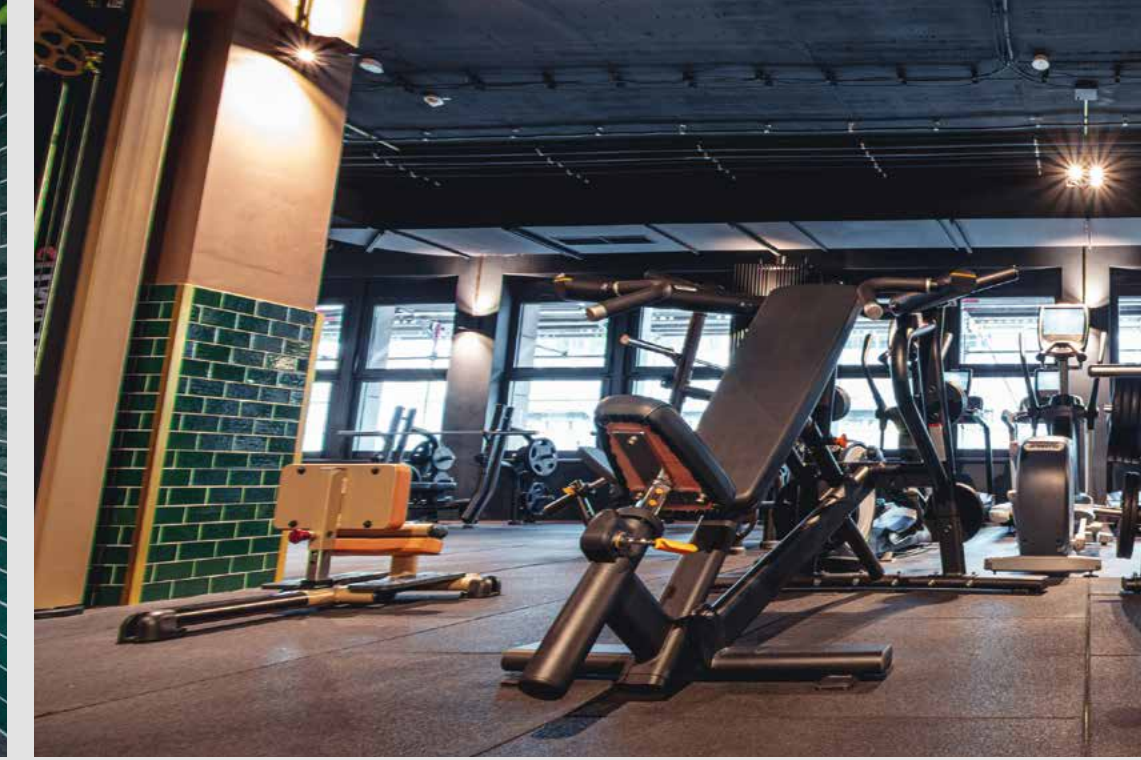
Architect: David Chipperfield Architects, London
www.davidchipperfield.com

Owner: Quantum Immobilien AG, Hamburg

Facade: Green lightly black nuanced

Format: Slit tiles 122 x 69 x 14 mm

Photo: Elb Gym, Hamburg



Bremer Landesbank Bremen • DE



Architect: Caruso St John Architects
www.carusostjohn.com

Facade: White glazed

Format: 240 x 71 x 10 mm, special shaped parts, 9 different horizontal and vertical angles

Photo: Esendiller+Gnegel Designer



Kornmarkthaus Bautzen • DE

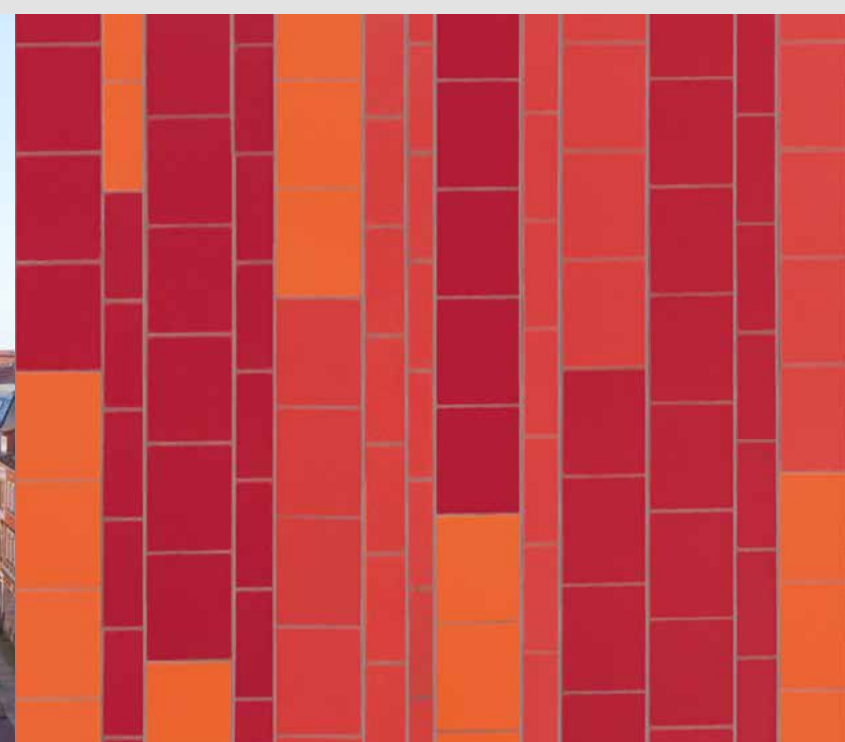


Architect: Bauplanung Bautzen GmbH
www.bauplanung-bautzen.de

Owner: Bautzener Wohnungsbaugesellschaft mbh

Facade: Variable architectural format

Photo: Esendiller+Gnegel Designer



Apartments Katzenbach Zürich • CH



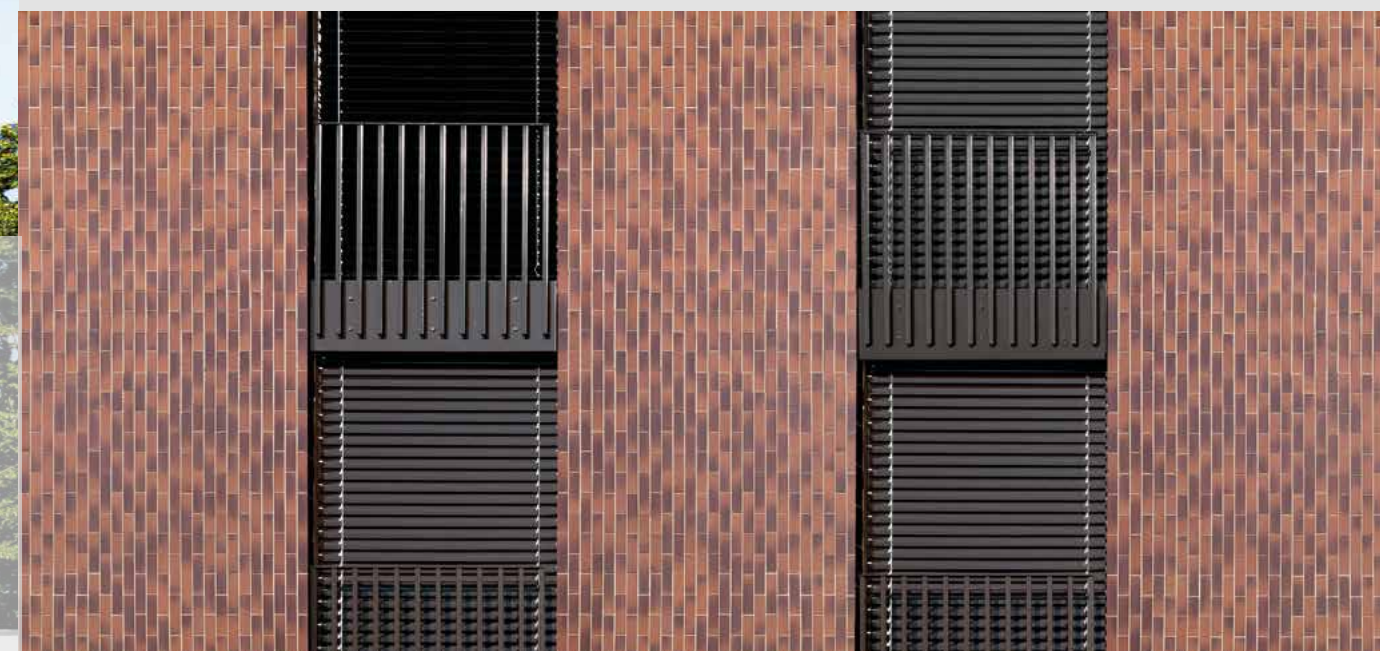
Architect: BS+EMI Architektenpartner AG, Zurich
www.bs-emi.ch

Owner: Baugenossenschaft Glattal, Zürich

Facade: Brown glazed 14/108

Format: 259 x 80 x 10 mm

Photo: Roland Bernath



U-Bahn Hof Gesundbrunnen Berlin • DE



Architect: Hentschel - Oestreich Architekten, Berlin
www.hentschel-oestreich.de

Owner: Deutsche Bahn AG

Facade: Turquoise 8772, light green 8555, lime green 238a, grass green 8561

Format: 310 x 150 x 14 mm, slightly nobbled



Intercultural Living Veringeck Hamburg • DE



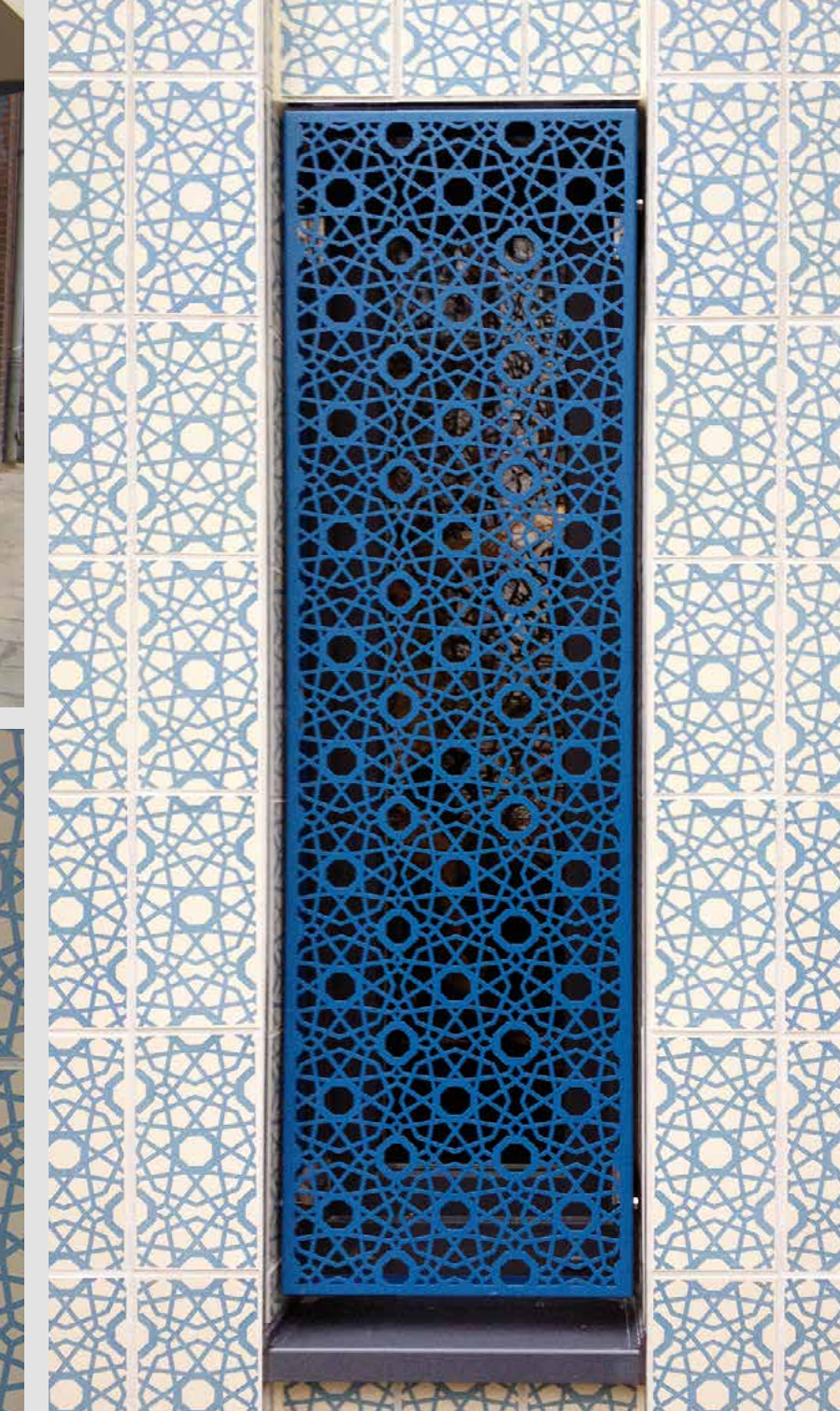
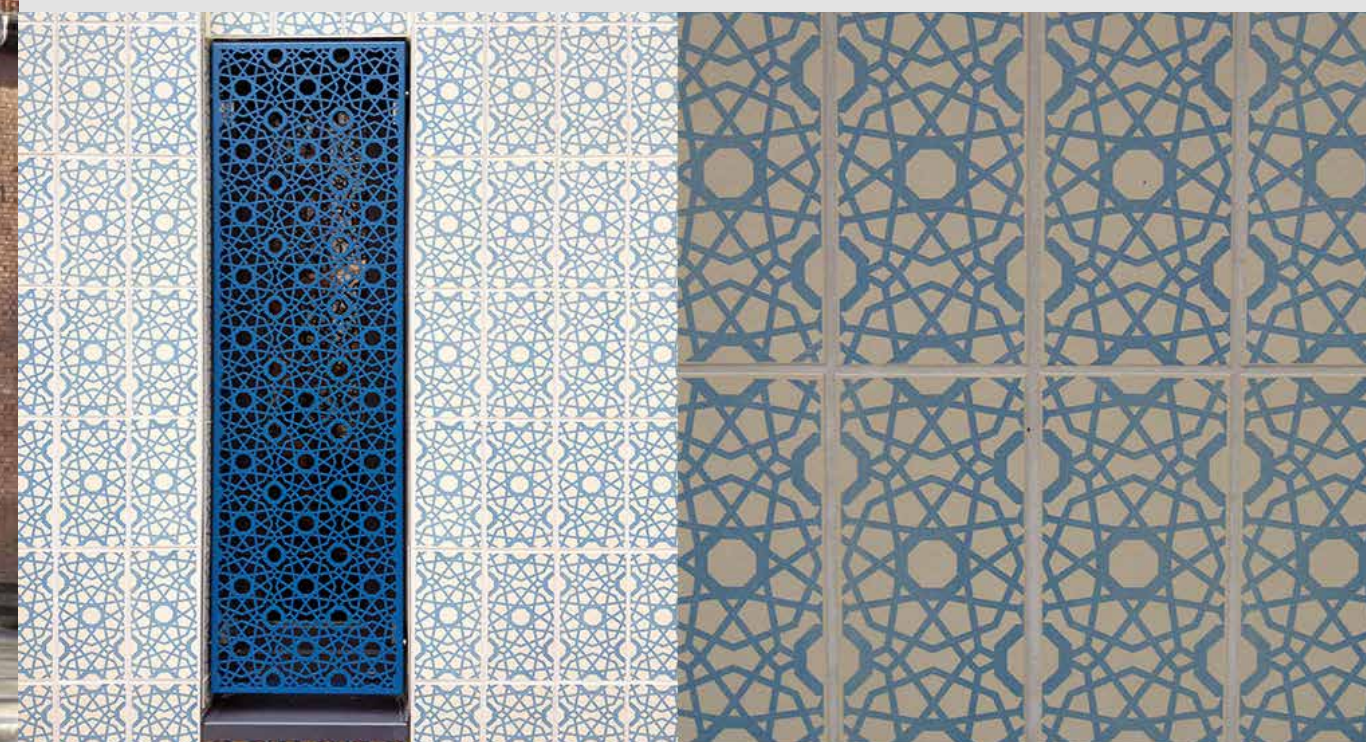
Architect: Ostermann Architekten, Hamburg
www.gutzeit-ostermann.de

Owner: GbR Veringeck

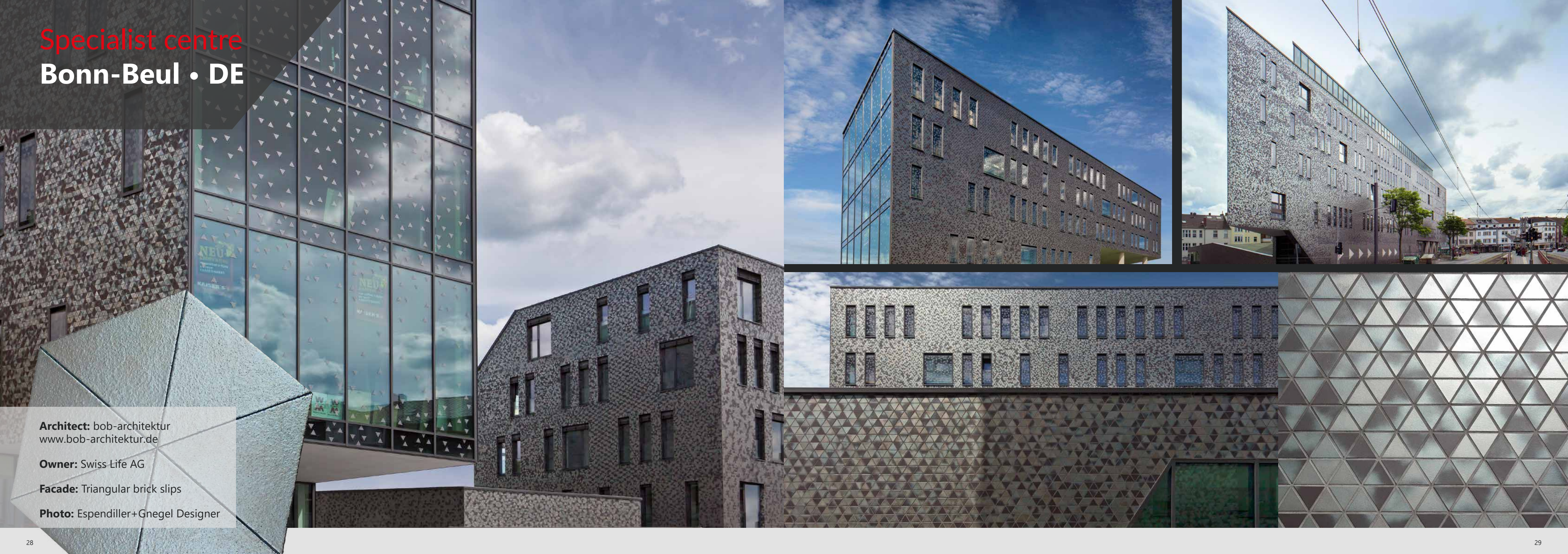
Facade: Girit Ornament

Format: 280 x 140 x 8 mm

Photo: Esendiller+Gnegel Designer



Specialist centre
Bonn-Beul • DE



Architect: bob-architektur
www.bob-architektur.de

Owner: Swiss Life AG

Facade: Triangular brick slips

Photo: Ependiller+Gnegel Designer

Apartments Steinwies

Zurich • CH



Architect: Edelaar Mosayebi Inderbitzin Architekten
www.emi-architekten.ch

Owner: Metzger-Versicherungen Genossenschaft,
Zürich

Facade: Chrome oxide green, black-green, blue-green

Format: 365 x 60 x 10 mm

Photo: Roland Bernath



DLR „SpaceLIFT“
Bremen • DE

Architect: Kister Scheithauer Gross Architekten und Stadtplaner, Köln

www.ksg-architekten.info

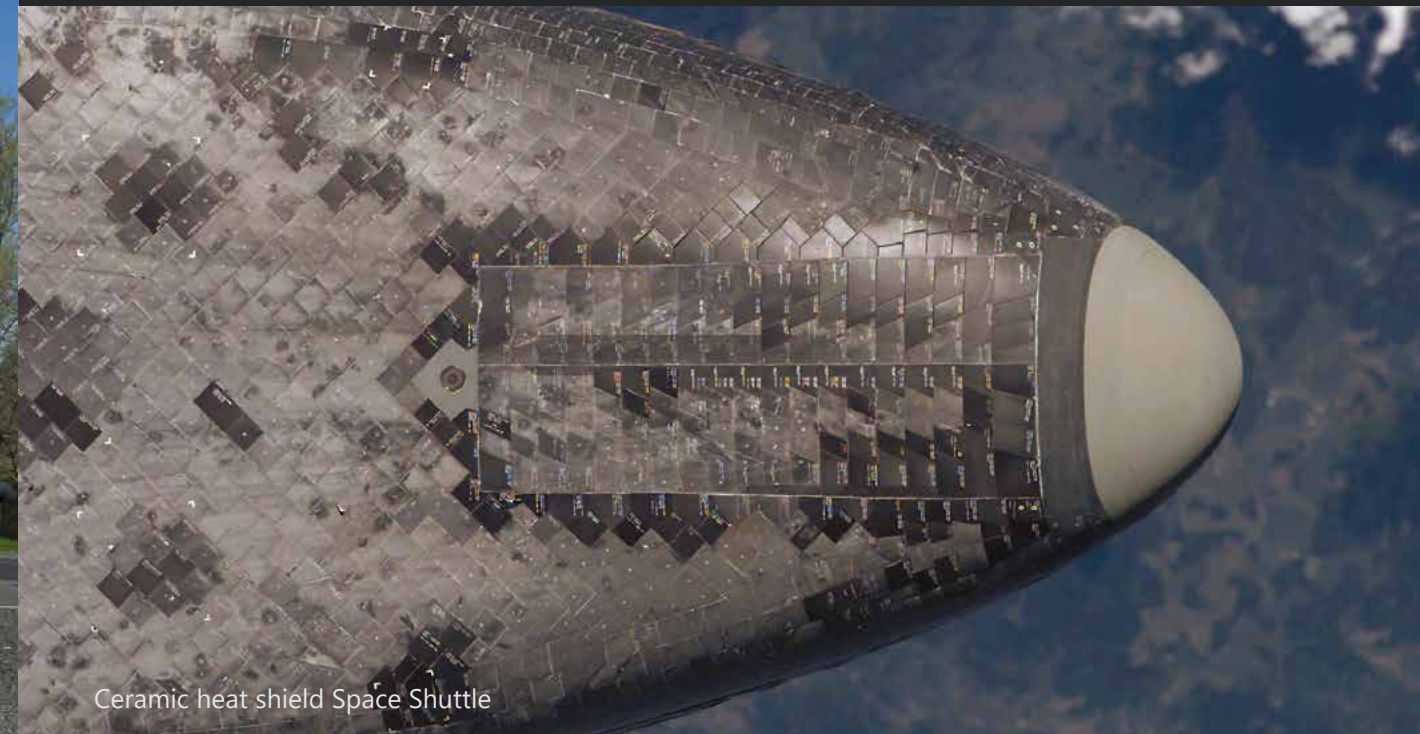
Owner: Deutsches Zentrum für Luft- und Raumfahrt

Facade: Special production Shuttle

Photo: Yohan Zerdoun



Research building for the German Aerospace Centre



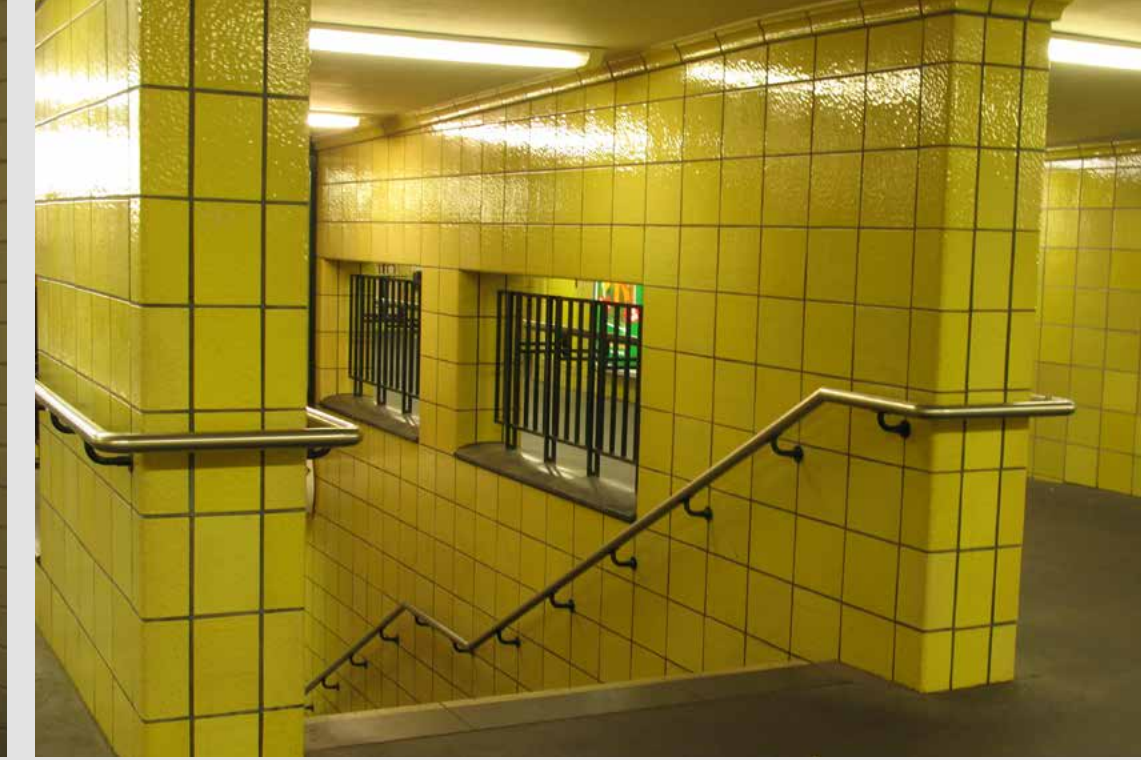
Ceramic heat shield Space Shuttle



U-Bahnhof Friedrichstraße
Berlin • DE



Facade: hammered surface high shiny yellow



State Library
Berlin • DE



Architect: HG Merz Architekten, Berlin
www.hgmerz.com

Facade: Cream W7

Format: Special formats of quarter bricks und slit tiles
122 x 69 x 57 mm, 122 x 69 x 12 mm

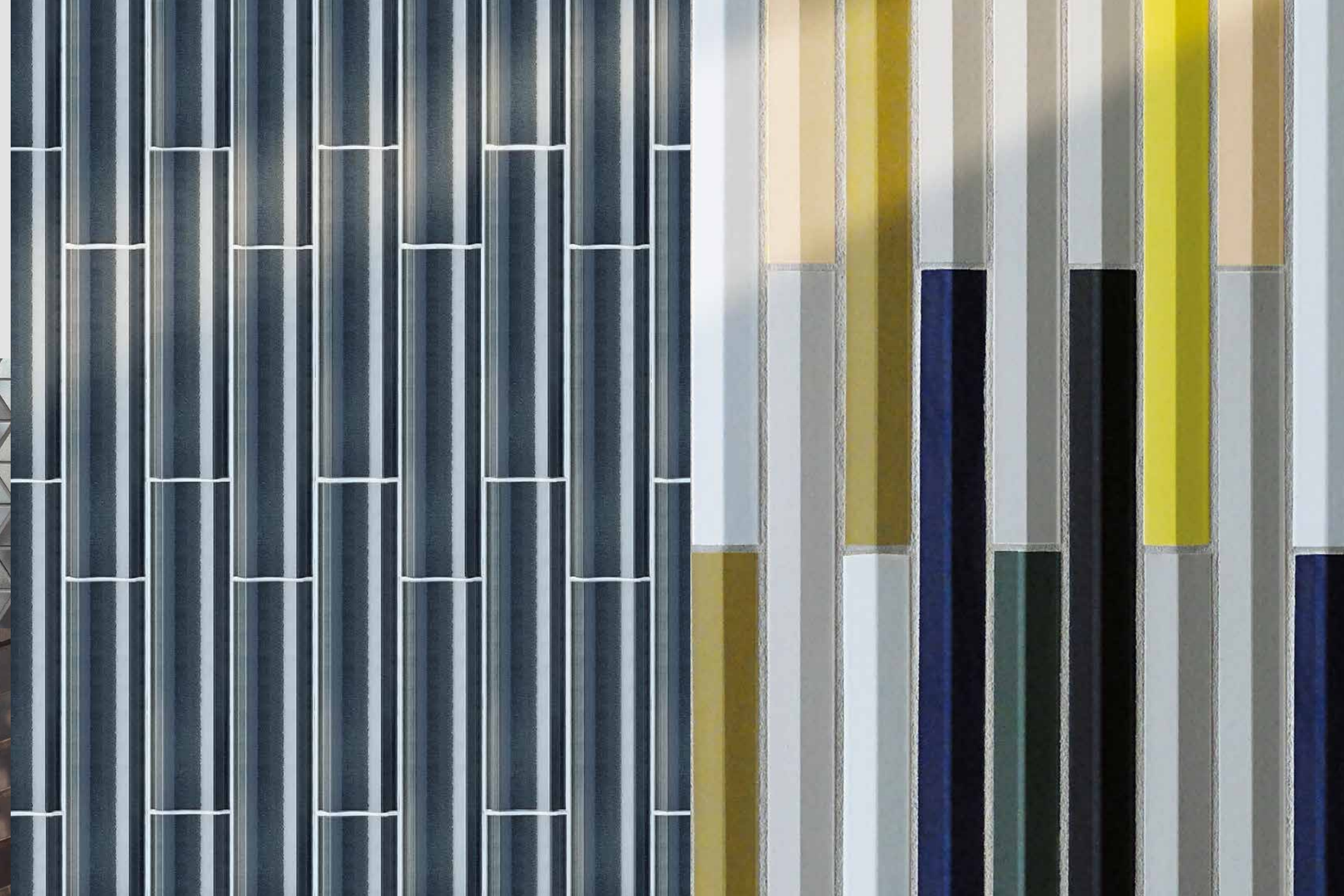
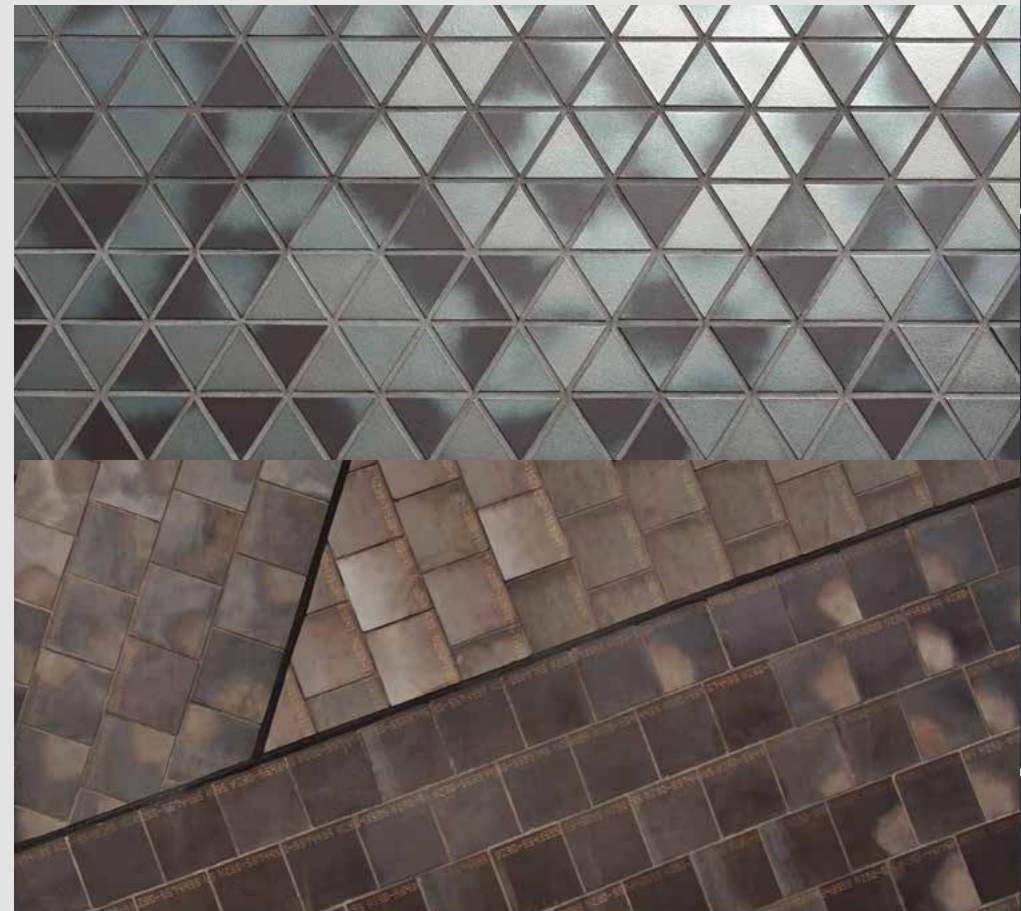
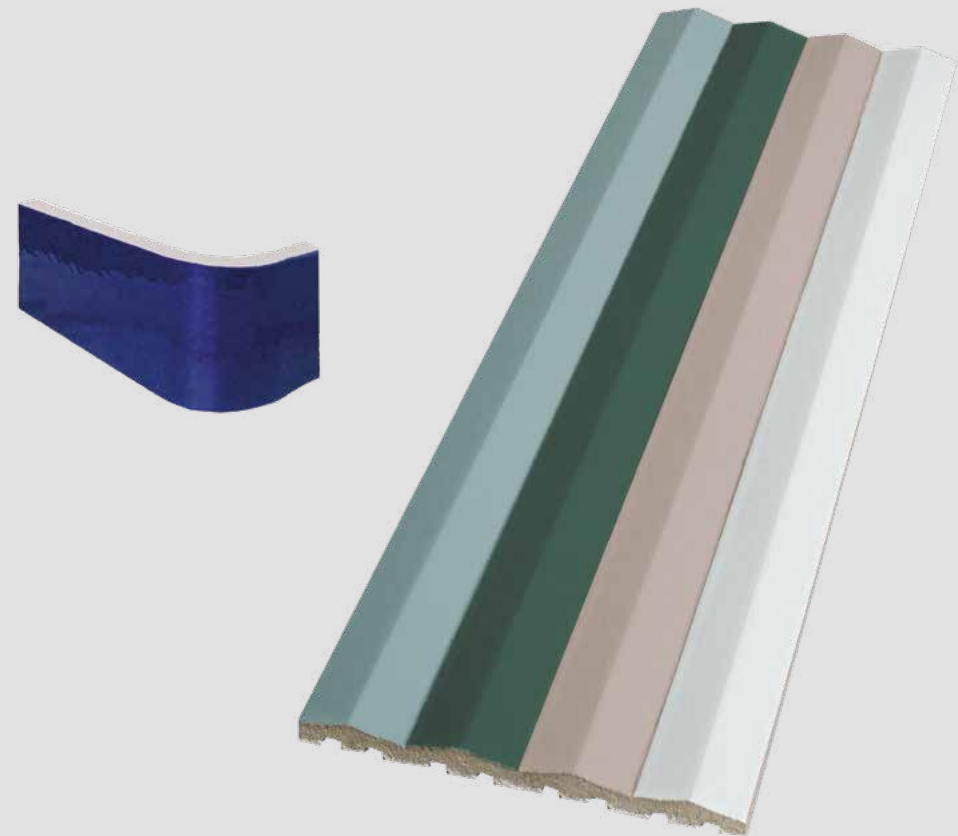


3D-Ceramics and custom-made formats

There is plenty of scope for covering the facade of a building with a ceramic protective shell. Our reference projects show only an excerpt of the many possibilities.

Basically, all ceramic colours, mixed colour gradients and metallic shades are possible. A combination of formats, with changing surfaces and / or changing colours are design possibilities. Profiles, mouldings, large or acute angles can be realised and are produced according to your specifications.

Create your architectural project and benefit from the advantages of a slim and structurally light wall construction made of ceramic facades.



Architect: eap Architekten, Munich
www.eap-architekten.de

Owner: Gemeinnützige Wohnungsbaugesellschaft mbH
Ingolstadt

Facade: 3D Ceramics with saddle roof: Yellow,
Astralwhite, Light-grey, Light-pink, Marineblue

Format: 365 x 10 x 60 mm

Photo: Fotoatelier Bernhard



Standard colour range



Astralweiß 300

glazed

NF

Plant Westerkappeln



Rapsgelb 310*

glazed

NF

Plant Westerkappeln

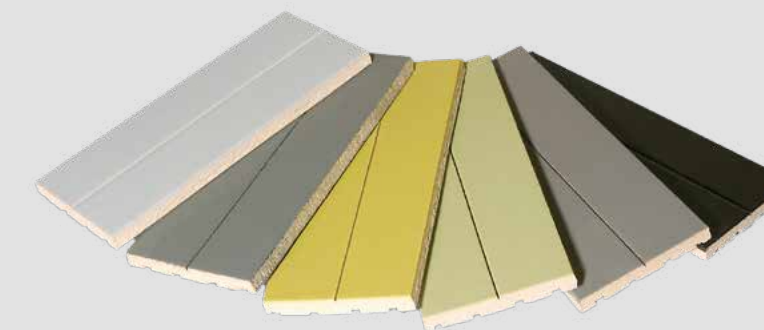


Apfelgrün 400*

glazed

NF

Plant Westerkappeln

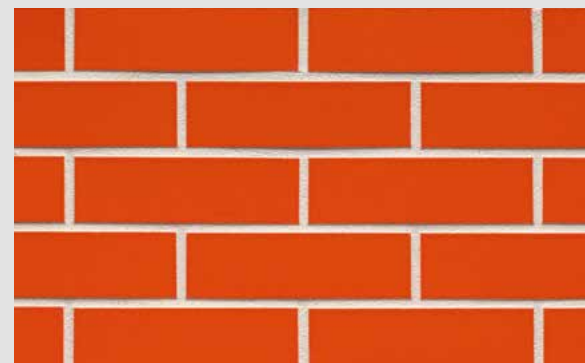


Lichtgrau 6290*

glazed

NF

Plant Westerkappeln



Apricot 320*

glazed

NF

Plant Westerkappeln



Friesenblau 340*

glazed

NF

Plant Westerkappeln

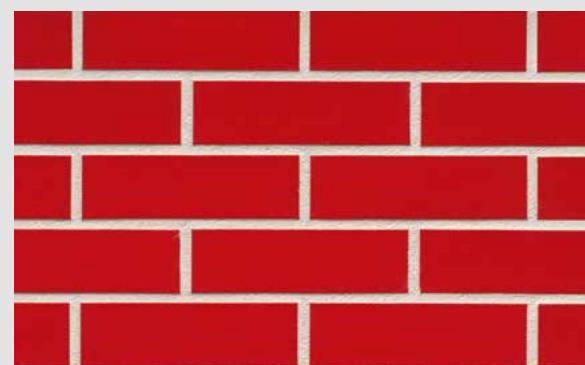


Islandgrau 380*

glazed

NF

Plant Westerkappeln



Signalrot 330*

glazed

NF

Plant Westerkappeln



Marineblau 350*

glazed

NF

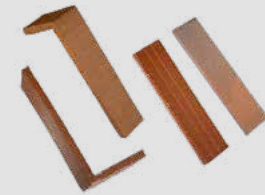
Plant Westerkappeln

Sortings marked with * can only be produced for the object sector if larger quantities are purchased. More formats on request.
Variations in colour, play of colours and proportions may be possible due to production/printing reasons.

Our product range



Facing bricks



Brick strips



NORDIC



Clay pavers



Clinker roof tiles



Floor ceramics



DIN EN 771-1
(DIN V 20000-401)
DIN 4051
DIN EN 1344



Production plants of the ABC-Klinkergruppe

Headquarter

ABC-Klinkergruppe
Grüner Weg 8 · D-49509 Recke
Tel. +49 (0) 54 53 / 93 33 0
abc@abc-klinker.de · www.abc-klinker.de



Klinker- und Keramikwerke · A. Berentelg & Co. KG

Klinkerwerk Hörstel
Dornierstraße 11 · D-48477 Hörstel
Phone +49 (0) 54 59 / 93 43 0
Show room „Ringofen“ in the Plant
Tel. +49 (0) 54 59 / 93 43 11

Klinker- und Keramikwerke · A. Berentelg & Co. KG

Klinkerwerk Schüttorf
An der Ziegelei 6 · D-48465 Schüttorf
Phone +49 (0) 59 23 / 96 00 0

Recker Ziegelwerk · Berentelg & Hebrok OHG

Mettinger Straße 135 · D-49509 Recke
Phone +49 (0) 54 53 / 9 30 50

Hollager Ziegelwerk · Berentelg & Hebrok GmbH & Co. KG

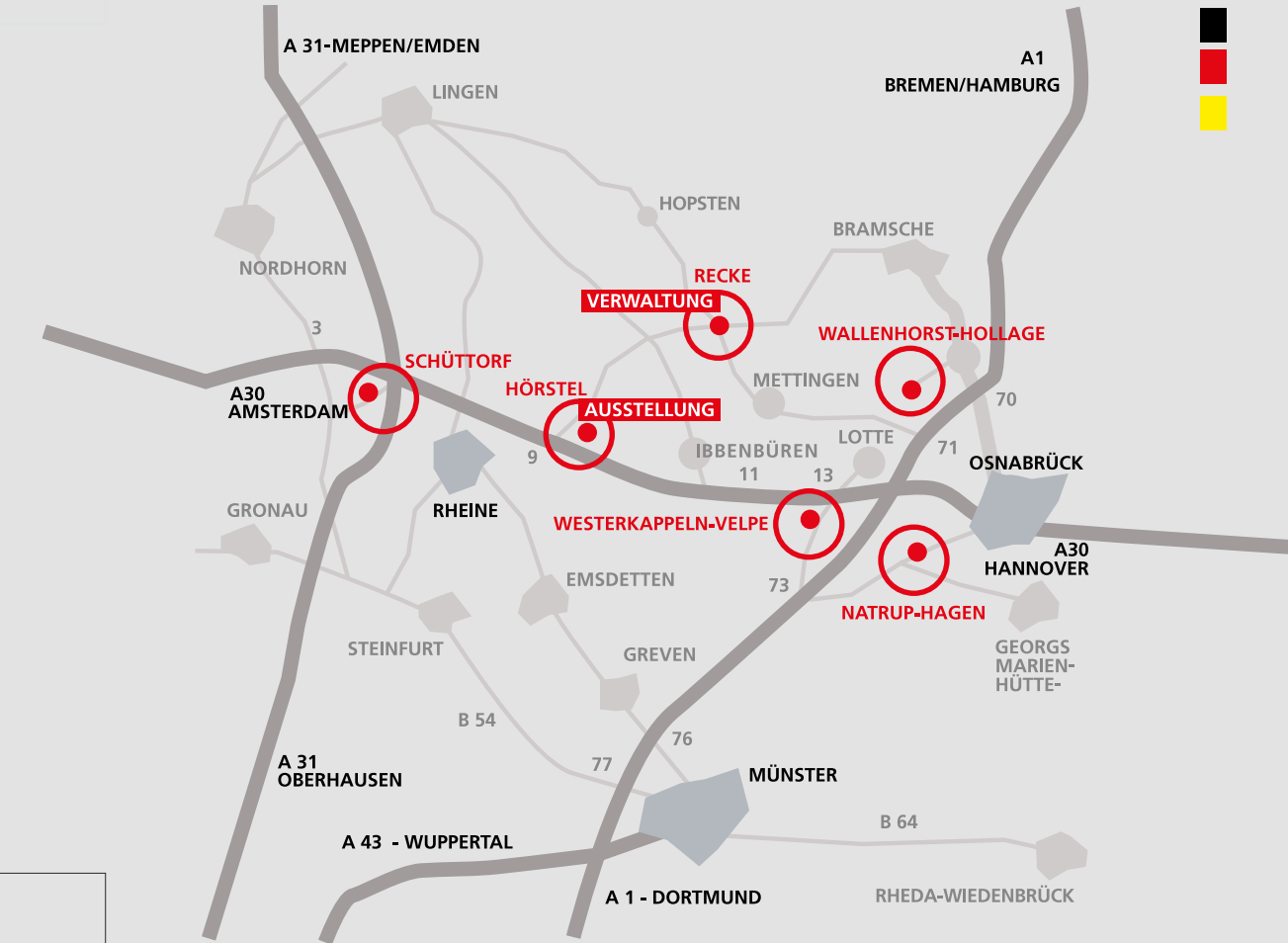
Hollager Straße 106 · D-49134 Wallenhorst-Hollage
Phone +49 (0) 54 07 / 8 30 40

KDW-Klinkerdachziegelwerk · GmbH & Co. KG

Ziegeleiweg 1b · D-49170 Natrup-Hagen
Phone +49 (0) 54 05 / 6 19 19 60

ABC-Keramik · H & R Berentelg GmbH & Co. KG

Industriestraße 10 · D-49492 Westerkappeln
Phone +49 (0) 54 56 / 93 47 0



STADTHAUSBRÜCKE

Poliform

Poliform

Poliform

Poliform

ABC-Keramik

H & R Berentelg GmbH & Co. KG

Industriestraße 10

D-49492 Westerkappeln

Phone +49 (0) 54 56 / 93 470

www.abc-klinker.de