

CLAY PAVERS



ABOUT US

We, the ABC Klinker Group, are a family-owned business in the brick and tile industry in Germany and can look back on around 130 years of experience. Today, our ABC Klinker Group is in the fifth generation and manufactures various brick products at six locations in Germany. Our product portfolio includes facing bricks, brick slips, ceramic facades, clay pavers, clinker roof tiles and floor ceramics.

SUSTAINABILITY

We produce sustainable natural building materials as environmentally friendly as possible. For this reason, we focus on low energy consumption in production with gentle, efficient use of resources and low material consumption.

The natural slate clay of the Tecklenburger Land forms the basic material of our ABC products - a valuable, genuine natural product!

VISIT OUR SHOWROOM „RINGOFEN“ IN HÖRSTEL

In our showroom, the Ringofen, Dornierstr. 11 in Hörstel, we offer you numerous suggestions and various possibilities for your house construction. For an individual consultation we are available Monday to Friday from 08.30 am to 05.30 pm and Saturday from 09.00 am to 01.00 pm. For an appointment, you can reach us by phone at +49 (0) 54 59 / 93 43 11 or by e-mail at ausstellung@abc-klinker.de.





Features of our products



Frost-resistant



Environmentally friendly



Water absorption $\leq 6\%$



Colourfast



Weatherproof



Fire behavior: euroclass A1



Standardized



Graffiti removable

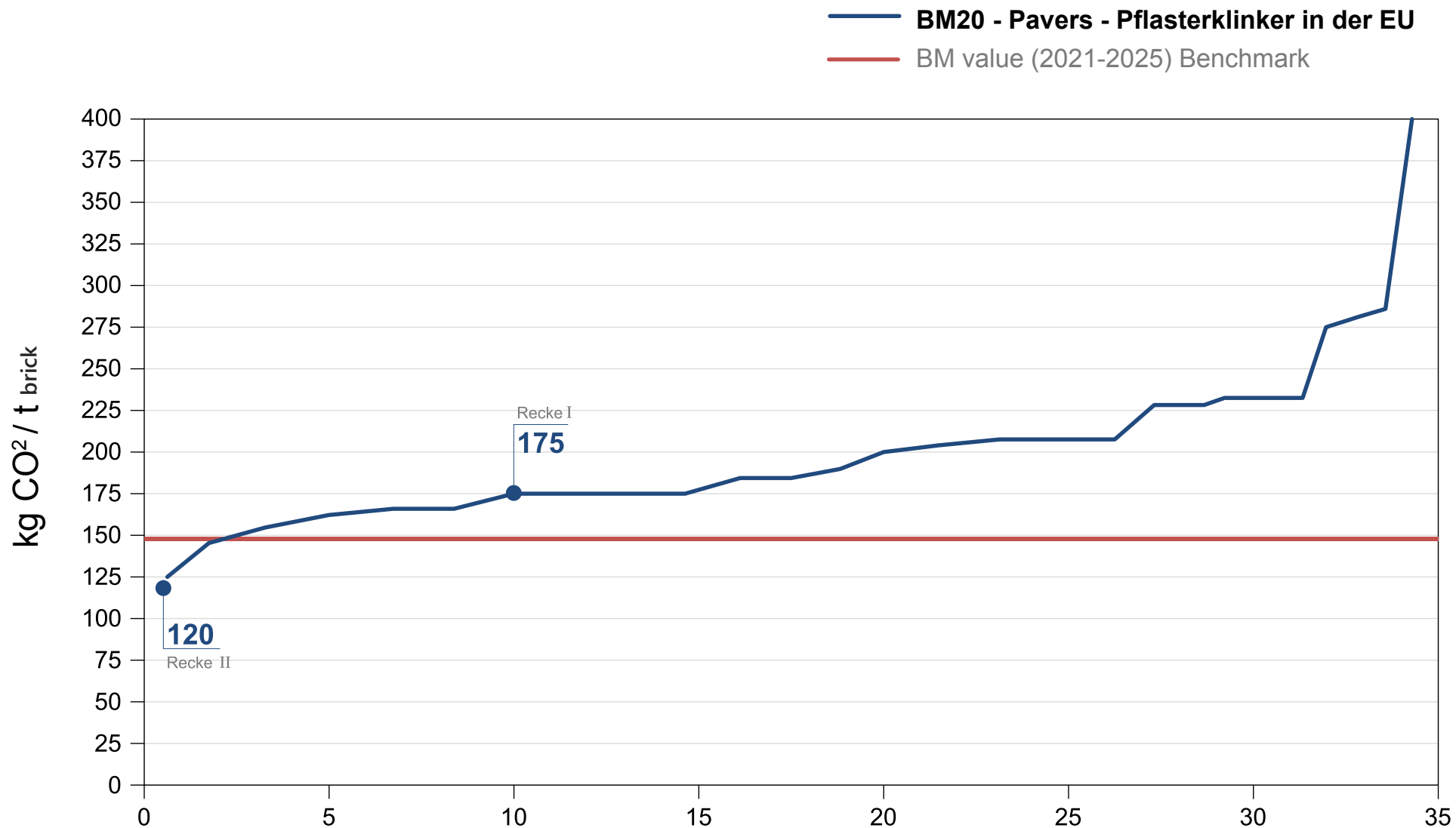


Our plant Recke II has the lowest CO₂ emission of all paving brick plants in the EU

The ETS according to EU assessment indicates the CO₂ emission from drying to firing of bricks.

Result:

Compared to the 35 EU plants of pavers, our plant Recke II ranks first with 120 kg CO₂/tbrick.



Ranking of EU paver plants

Source: European Commission

Update of benchmark values for the years 2021–2025 of phase 4 of the EU ETS

Benchmark curves and key parameters. Final version issued on June 15, 2021

Durability and reusability of paving bricks



Pavers area in Flensburg

At the beginning of the 20th century, yellow-grey colored paving stones from the island of Bornholm in the Baltic Sea region were laid.

This old „Bornholm paving“ has been reused several times.

Our pavers are durable, colorfast, and highly sustainable, with a lifespan of over 150 years. Their sustainability and reusability are underscored by the Cradle to Cradle certification.

Sustainability is based on 3 pillars¹

Example: Reusing pavers²

Ecological pillar

Pavers are durable and can be reused.

Reusing old pavers saves approximately 80% of CO₂.

Economic pillar

The labor costs for removing, cleaning, and sorting old pavers currently correspond to the cost of purchasing new pavers.

„The bottom line is that the cost of reusing is the same as buying new.“

Social pillar

Example: City of Elmshorn

The city of Elmshorn has reused pavers in 14 streets, covering approx. 4,000 square meters. The city of Elmshorn decided to reuse the old paving stones on its sidewalks due to their visual and aesthetic qualities. These traditional, colorful sidewalks encourage people to strongly identify with their city.

¹ Quelle: Lay/Niesel/Thieme-Hack (2016), S. 703; Bundesministerium des Innern für Bau und Heimat (2019), S.15

² Quelle: Nachhaltige Verwendung von Pflasterklinkern – Chancen und Potentiale zur CO₂-Minderung Hochschule Osnabrück, Bachelorarbeit von Lukas Baar, 2020

If you are interested, we would send you the work.





Special production Lichtocker

Karen Blixens Place Copenhagen, Denmark | Format: 222 x 71 x 71 mm



Photo: Rasmus Hjortshøj



Photo: Kirstine Autzen



Colima beige-grey





Inner courtyard Vilnius, Lithuania



Special production Colima (Visible side with aquaterra surface)

Sports park, Munich-Freiham | Format: 240 x 90 x 52 mm



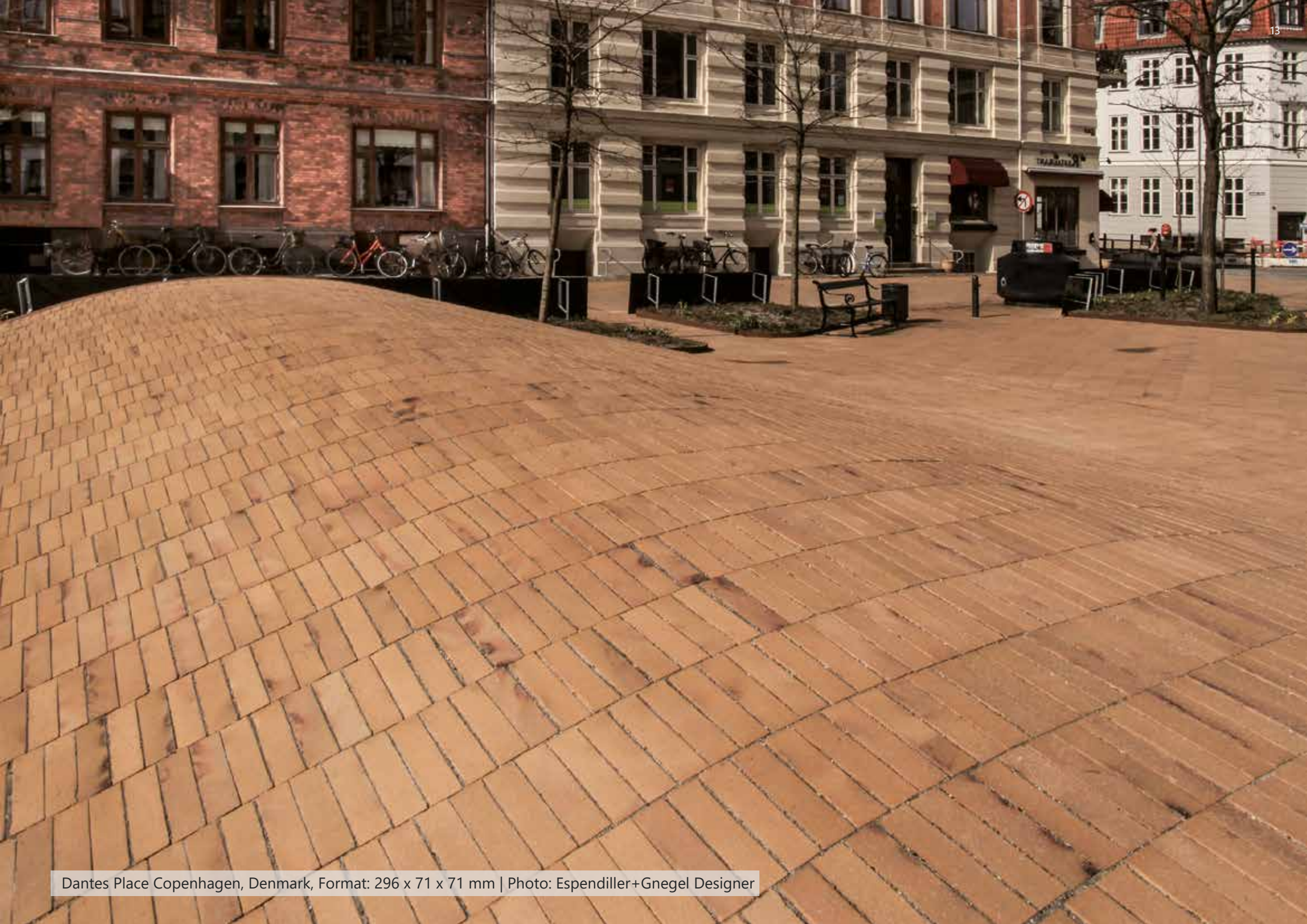




Variations in colour, play of colours and proportions may be possible due to production/printing reasons.

Copenhagen yellow coal





Dantes Place Copenhagen, Denmark, Format: 296 x 71 x 71 mm | Photo: Espendiller+Gnegel Designer



Copenhagen yellow coal

City Center Haren, Ems | Format: 292 x 71 x 100 mm



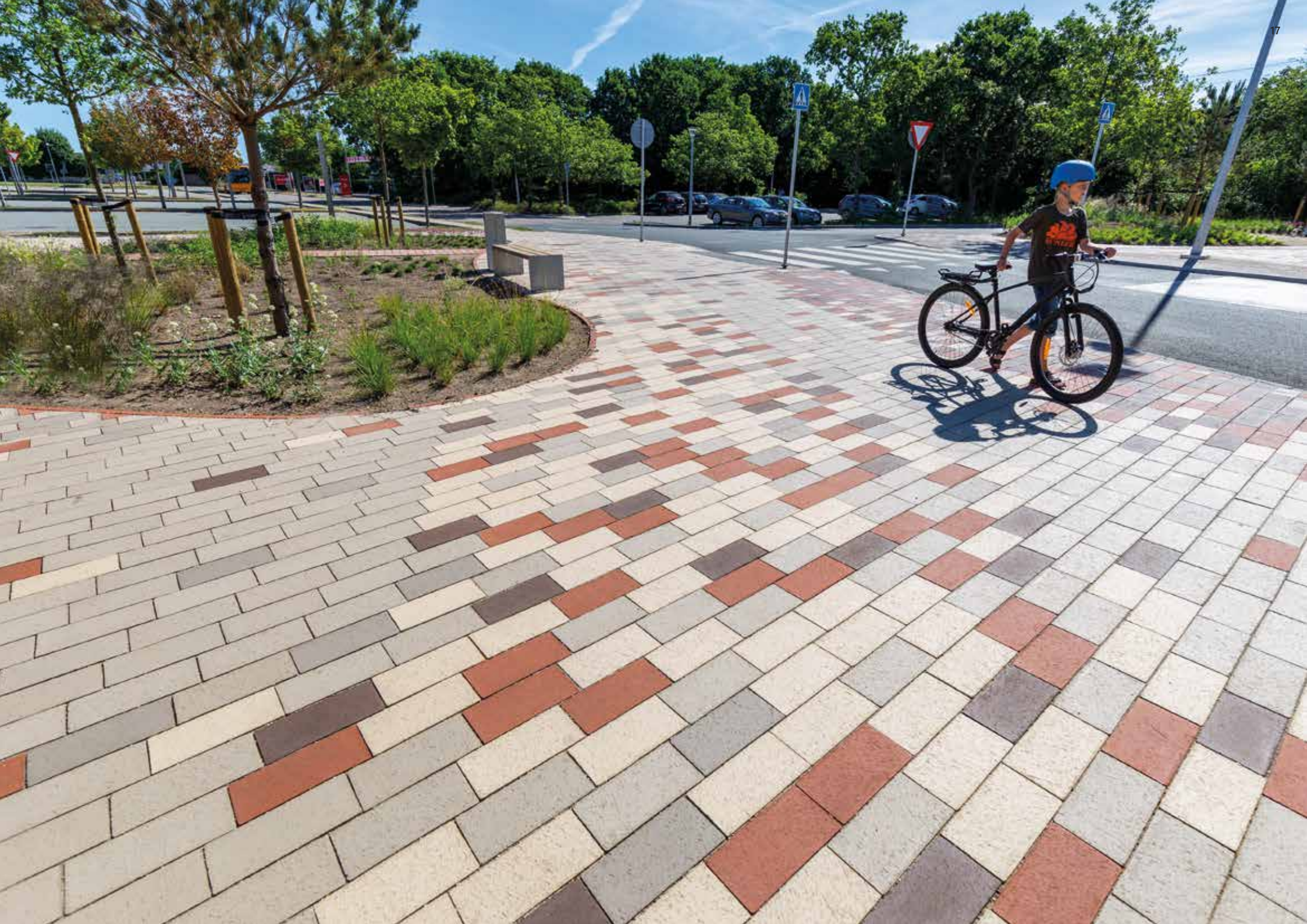




Mix of 5 different colours

Greve Midtbycenter, Denmark | Format: 300 x 145 x 52 mm
Colours: Light-grey, Dark-grey, Red, Brown, Genf, Beige-white-yellow







Luna lava-grey





Ceres Brewery Aarhus, Denmark



Variations in colour, play of colours and proportions may be possible due to production/printing reasons.

Berlin blue-anthracite



Photo: Esendiller+Gnegel Designer

Atlantis anthracite siver-grey





Gotland blue-brown smelted

Varde Garten, Denmark | Format: 292 x 78 x 52 mm







Emsgalerie 400x10x35 mm

Gotland blue-brown smelted

Castle Dyk, Jüchen | Format: 292 x 71 x 25 mm (cutted)

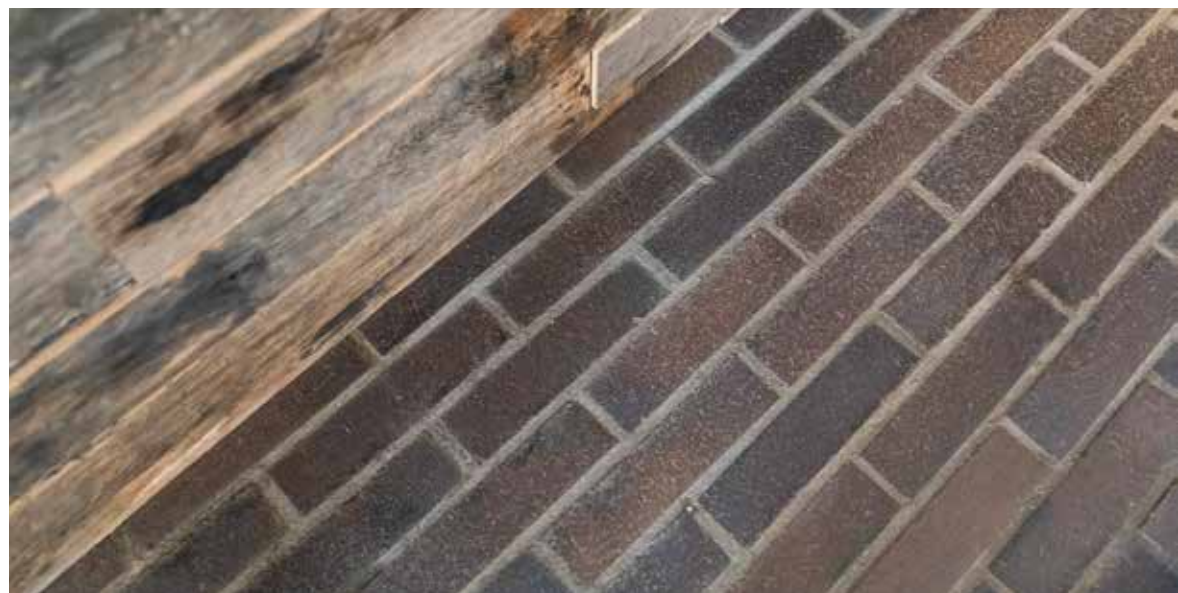




Photo: Heike Skamper



Midnight blue







Malmö blue-varicoloured smelted

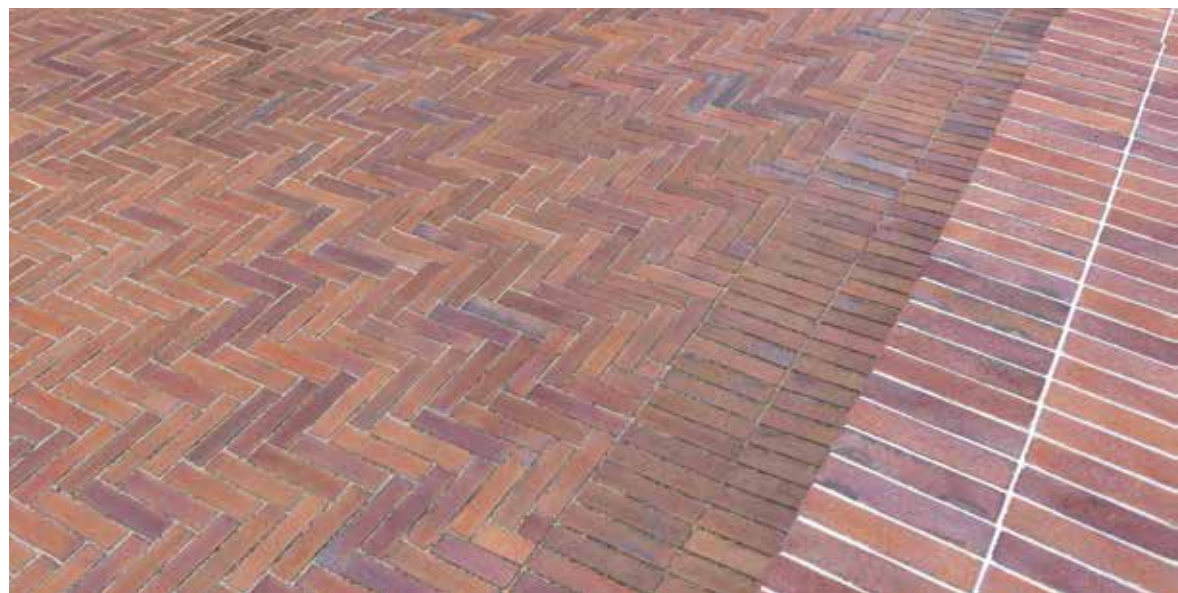


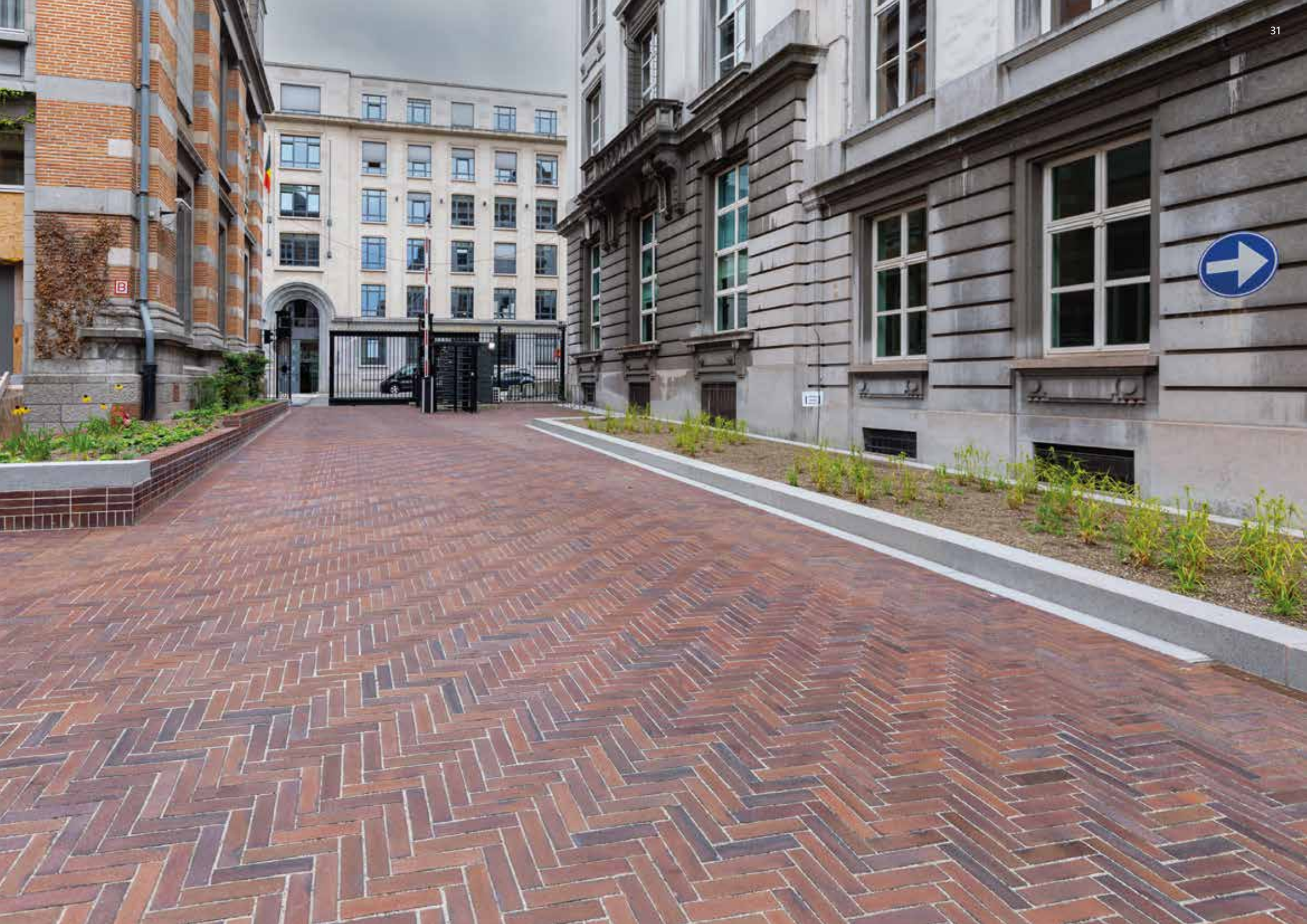




Malmö blue-varicoloured smelted

Parliament Brussels, Belgium | Format: 275 x 65 x 80 mm







Variations in colour, play of colours and proportions may be possible due to production/printing reasons.

Kiel heath-varicoloured

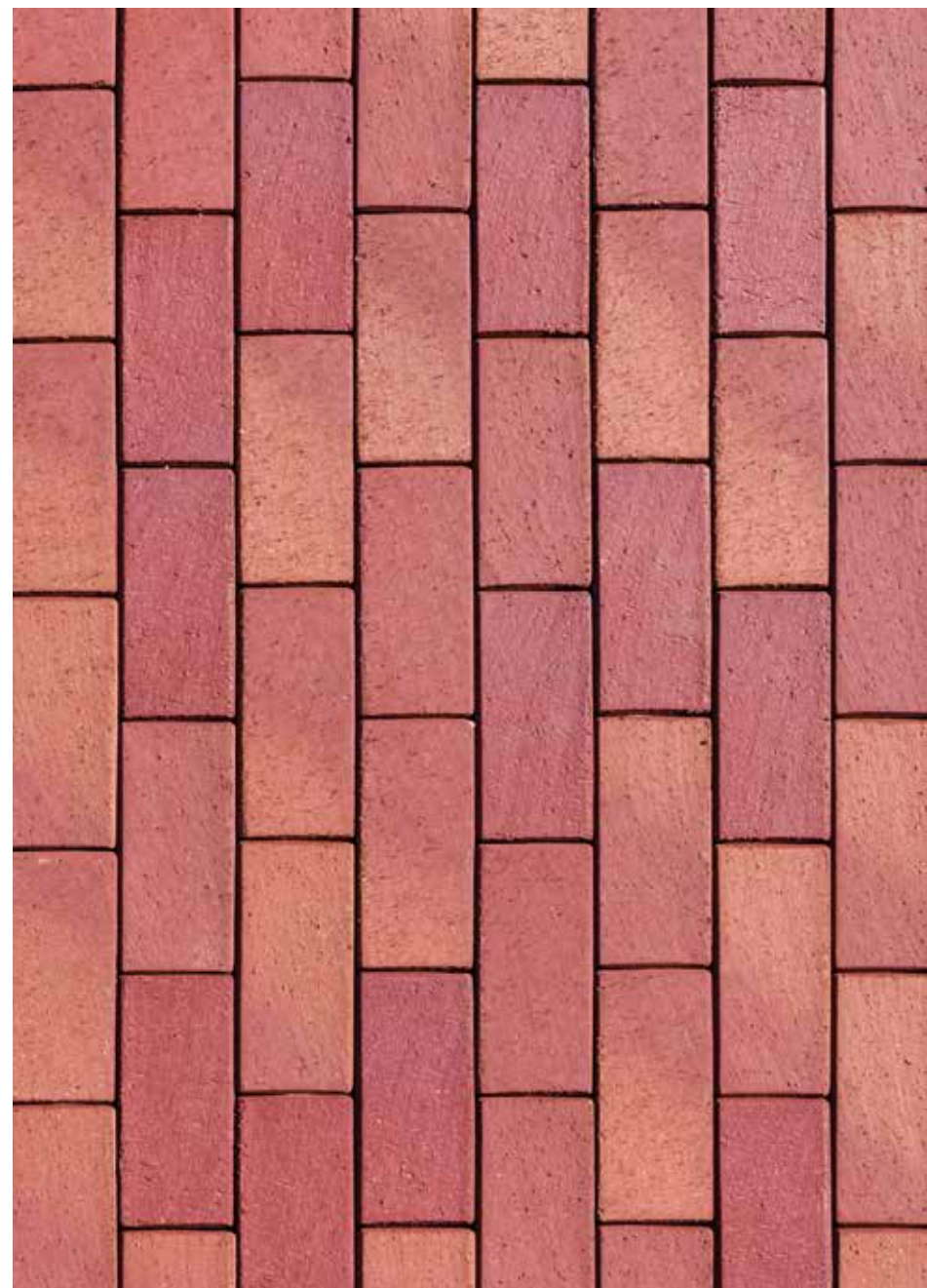


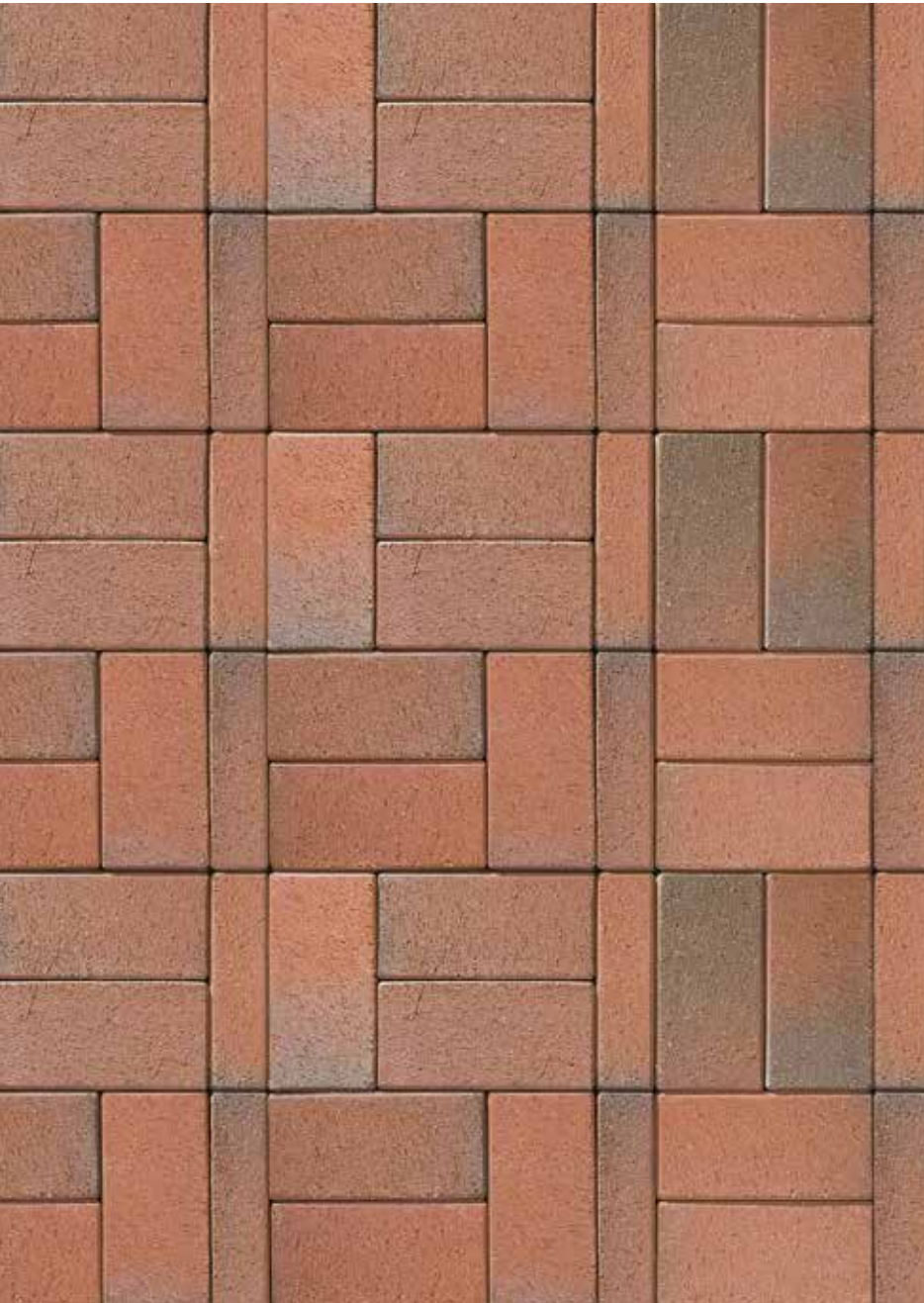
Photo: Esendiller+Gnegel Designer

Köln red-flamed



Foto: Esendiller+Gnegel Designer





Variations in colour, play of colours and proportions may be possible due to production/printing reasons.

Recker varicoloured

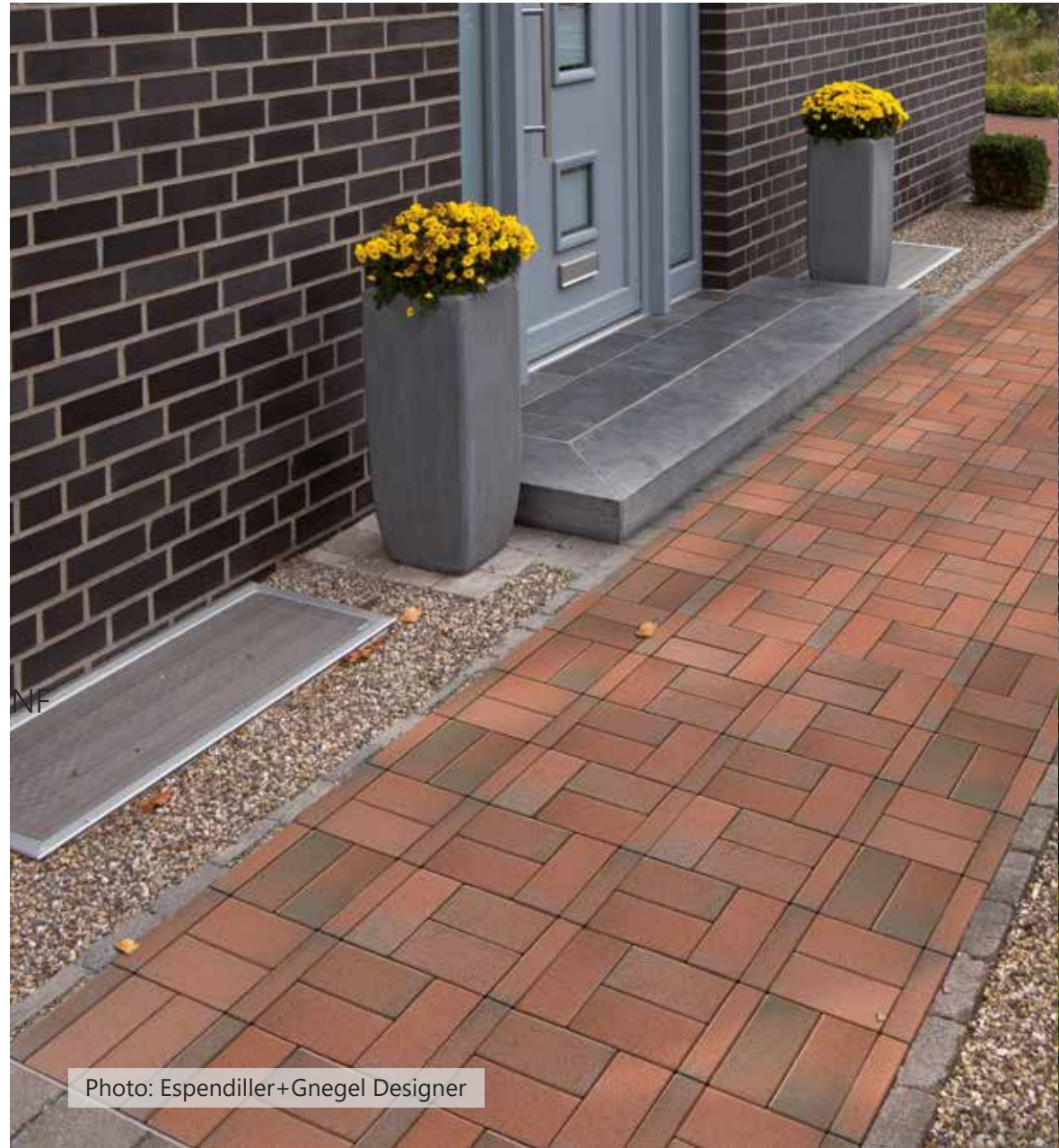


Photo: Esendiller+Gnegel Designer

Iron-melt varicoloured flamed

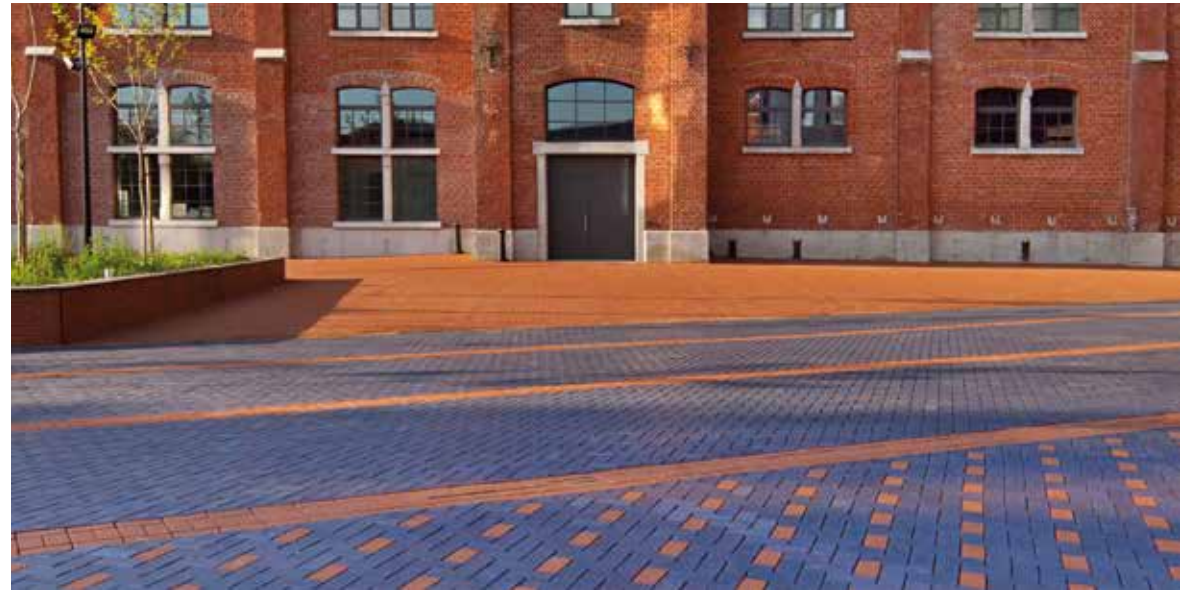




Mix of 2 different colours

Police headquarter Charleroi, Belgium

Colours: Red-nuanced, Blue glazed (Special production)







Mix of 2 different colours

Svendborg, Denmark | Format: 240 x 78 x 71 mm

Colours: Malmö, Gotland





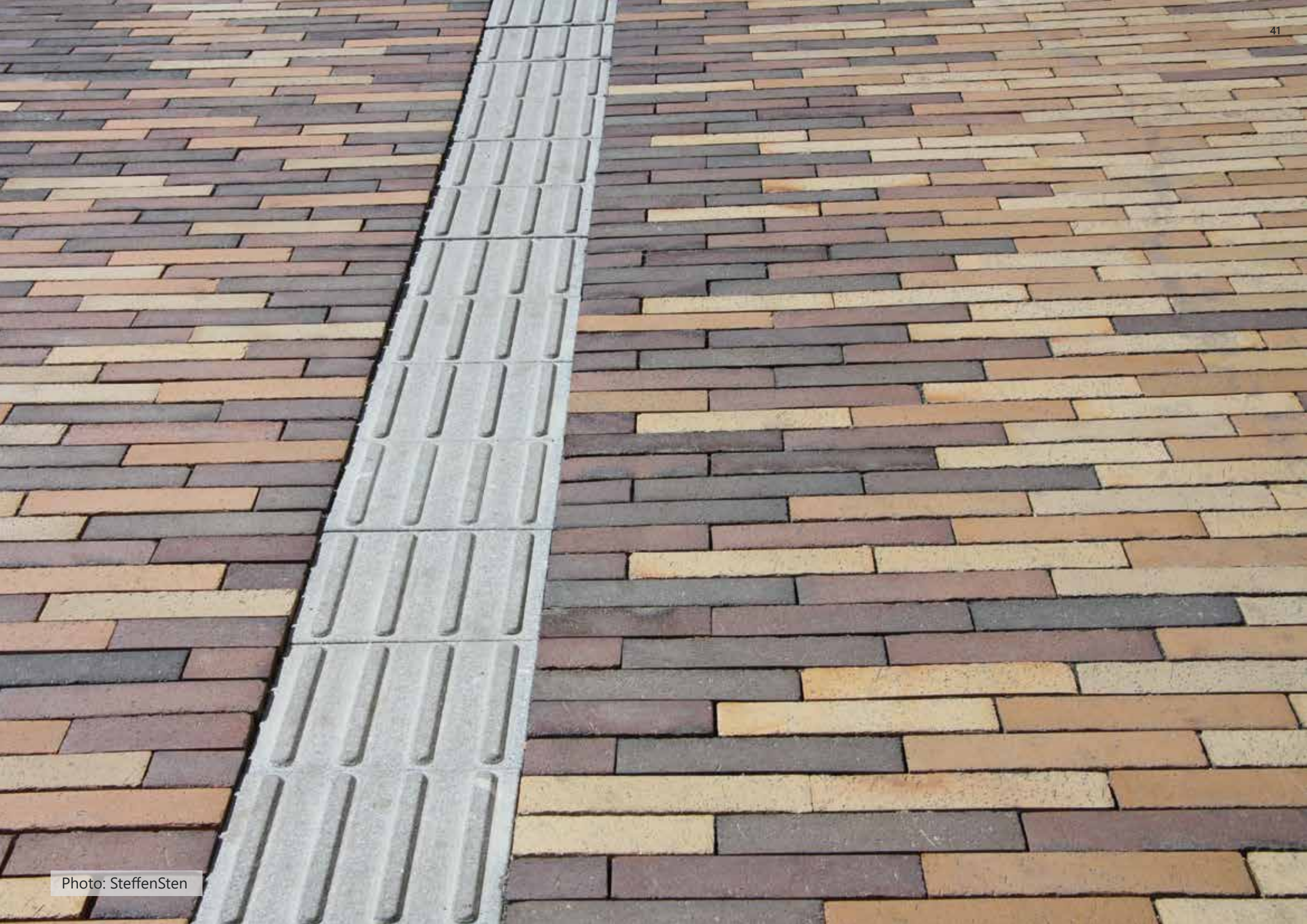


Mix of 5 different colours

Center of Odense, Denmark | Format: 296 x 71 x 71 mm

Colours: Lichtocker coal, Weizengelb coal, Aschegrau coal, Malmö, Gotland







Mix of 3 different colours

Beach promenade Wenduine, Belgium | Format: 236 x 78 x 80 mm
Colours: Red-nuanced, Leather-coloured nuanced, Brown-nuanced





Grass pavers



Grass pavers | Photo: Fotoatelier Bernhard

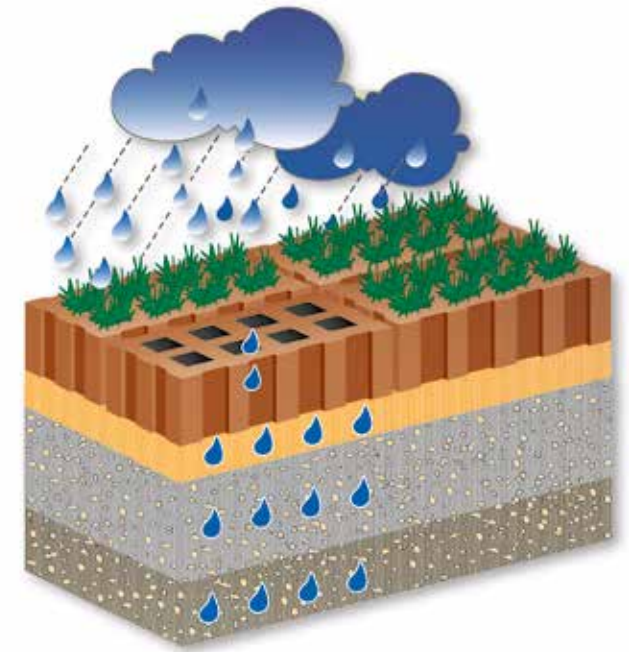


Grass pavers | Photo: Fotoatelier Bernhard

Wherever there is a green space that needs open infiltration and concurrently a solid, trafficable pavement installation, grass-pavers are the best choice.

Infiltration

An open infiltration laying is also possible with ABC quadrat and rectangular pavement clinkers. The stones should be laid with a 3 mm infiltration joint or a 5 mm grass joint.



- Grass pavers
- Bedding material
- Bearing layer
- Subsoil



Unsealed areas (special public funding measures possible)

Grass pavers

Surface infiltration via grass pavers grass pavers allow a pervious area of 30% - 45% in order to let rain (or snow fall) drain directly.

Accomplishment

- Filling material: mixture of approx. 15% surface soil (substrate), 35% sand 0/4 mm and 50% split 2/5 mm sowed in with a robust grass type
- Marginal areas which have to be drained, too, have to be in a downward slope towards the grass pavers

Application areas

Yard areas, residential paths, car parks, emergency access roads, campsites, terraces, paths and tree edges.



Unsealed areas (special public funding measures possible)

Aqua-Transit pavers

The Aqua-Transit pavers can be used wherever open infiltration and a solid, trafficable paving structure are required.

Accomplishment

- Filling of the openings according to the size with split 1/3 mm or 2/5 mm
- Joint and bedding material should be identical

Application areas

Yard areas, residential paths, cycle lanes, pedestrian and private areas and boundaries around trees for the purpose of aeration. The open infiltration subbase should be adjusted to the expected demands of the floor space.

Clay pavers with shortened spacers

SPACERS SPEED UP THE LAYING PROCESS

Tested by us – laying pavers becomes easier and quicker.

Summary

Laying pavers with adjusted or tapered spacers significantly eases work processes. Rapid fixation of clinkers saves time, also in regards to personal contribution.

Densely mounted

The pavers can be densely mounted in a short time. Adjusted spacers fully disappear in the filled in joint pattern. The surface remains homogenous. Fixing strings lengthwise and crosswise ensures straight joint patterns.

Edge protection is included

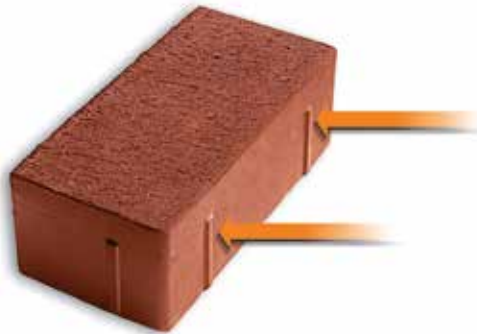
Safe is safe! The adjusted spacers protect the pavement from spalling. Fully filling the joints, as well as a stable foundation are prerequisites.

Clay pavers for heavily loaded areas.

The 80 mm clay paver with small chamfer and shortened spacer is particularly suitable for traffic areas used by vehicles and for cycling and walking paths.



200 x 100 x 80 mm clay pavers with small chamfer and shortened spacers



Shortened spacers always predetermine joint dimensions which allow clay pavers to be densely mounted in no time.



Bar pavers with edge protection

TAPERED SPACERS ON THE BAR PAVERS IN LONG FORMAT

Tapered spacers combined with a chamfer protect the pavement clinkers from spalling.



Peeled
surface



Smooth surface



pavers with tapered spacers



Shaped pavers and formats

Bar pavers with or without chamfer edges		Formats 200 x 78 mm 240 x 78 mm 292 x 71 mm 296 x 71 mm
		Other formats on request
Rectangle pavers with or without chamfer edges		Formats 200 x 100 mm 240 x 118 mm 300 x 150 mm 200 x 150 mm
		Other formats on request
Square pavers with or without chamfer edges		Formats 200 x 200 mm
		
Pavers with adjusted spacers		Formats 200 x 100 mm 240 x 118 mm 200 x 150 mm 292 x 71 mm 296 x 71 mm
		Bar pavers with adjusted spacers
		Bar pavers with tapered spacers
Clay pavers with adjusted spacers		Other formats on request

Half clay pavers

with middle chamfer, pre-cut or pre-scored

Formats

200 x 100 mm
240 x 118 mm



Shaped pavers

Formats

240 x 115 mm
300 x 100 mm



Other formats on request

Furrow- and Board pavers

Formats

270 x 100 x 71 mm (Furrow pavers)
240 x 200 x 62 mm (Board pavers)



Bishop caps

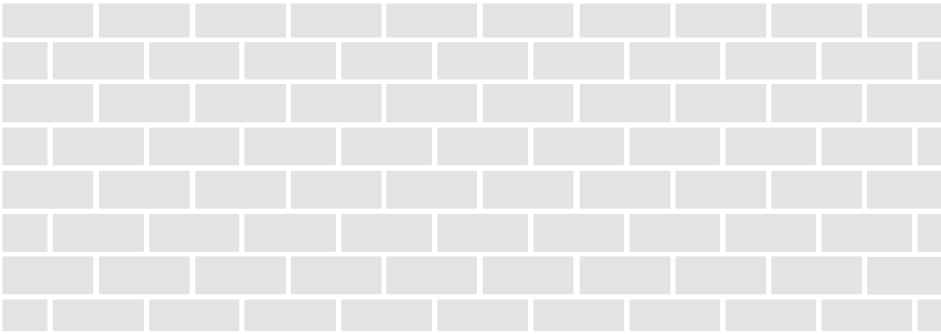
Formats

suitable for rectangle and square pavers

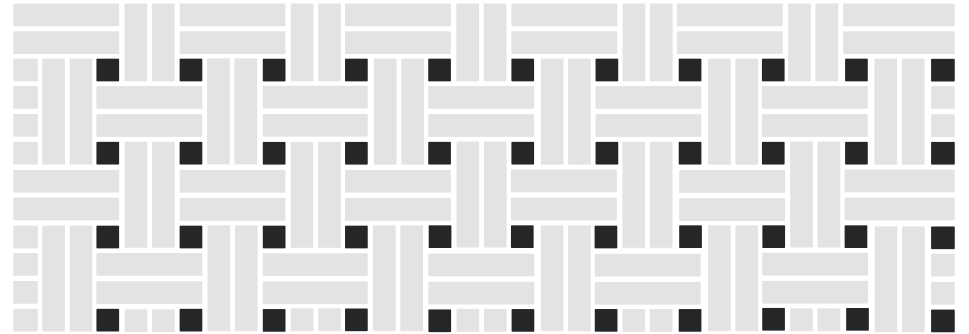


Laying patterns

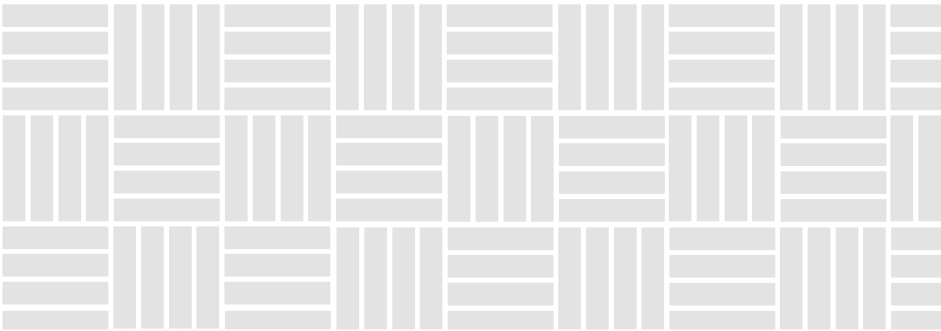
Stretching bond



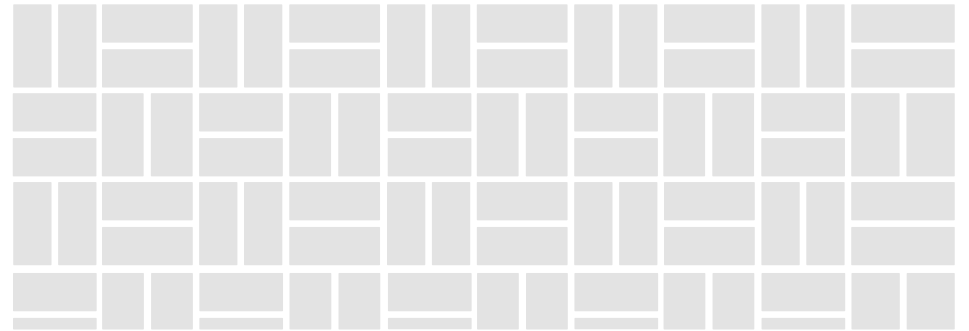
Braiding bond



Block bond



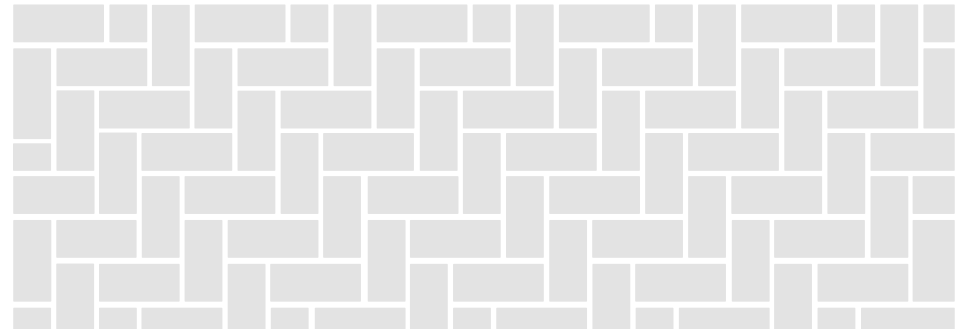
Block- and parquet bond



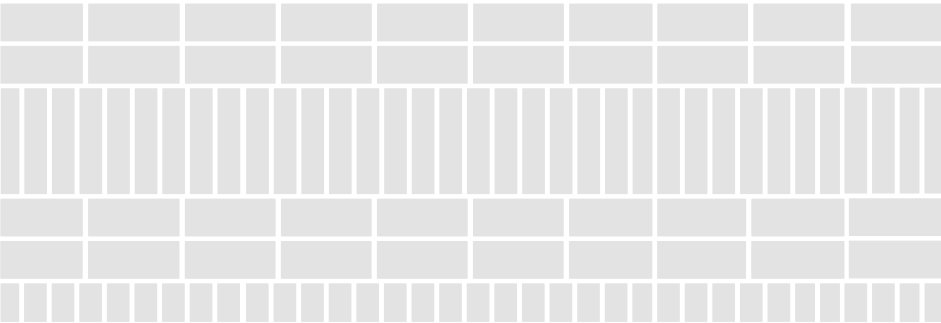
Fish bone bond



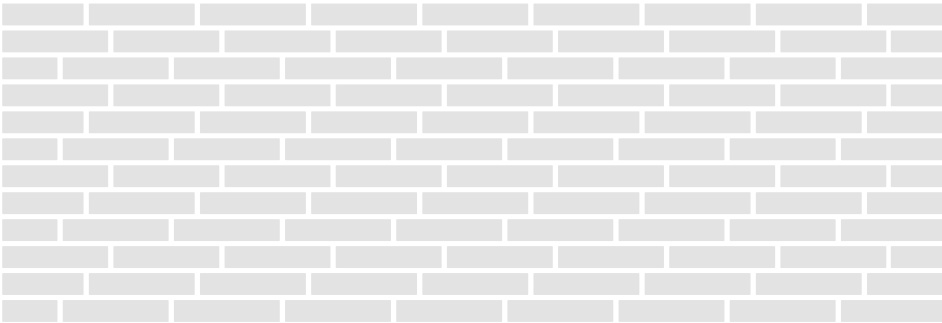
Ellbow bond



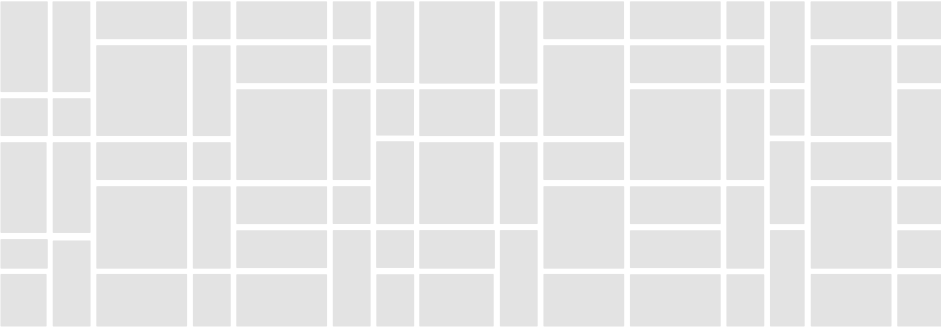
Laying mix



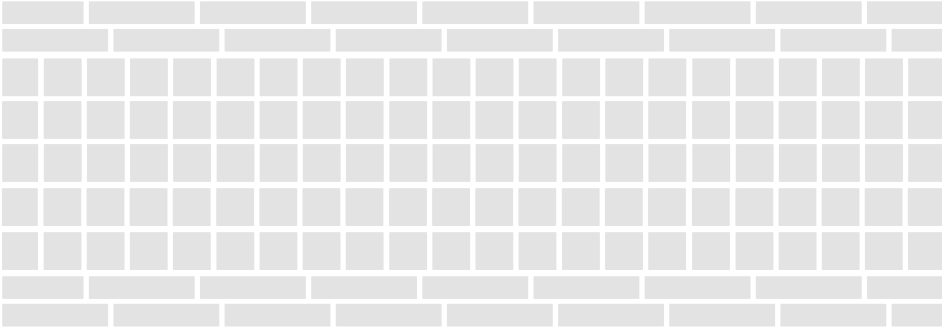
Laying mix



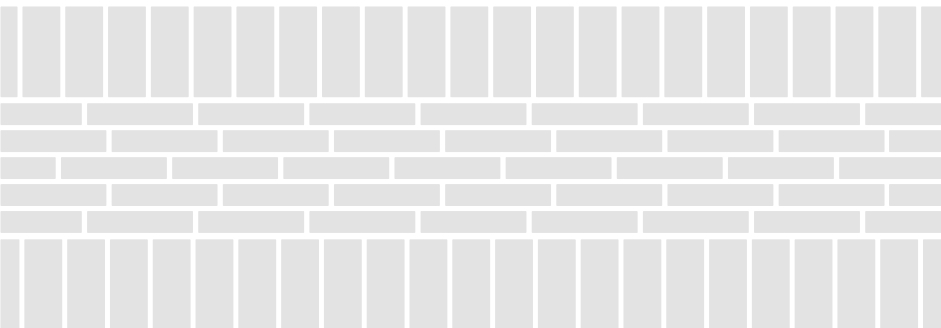
Laying mix



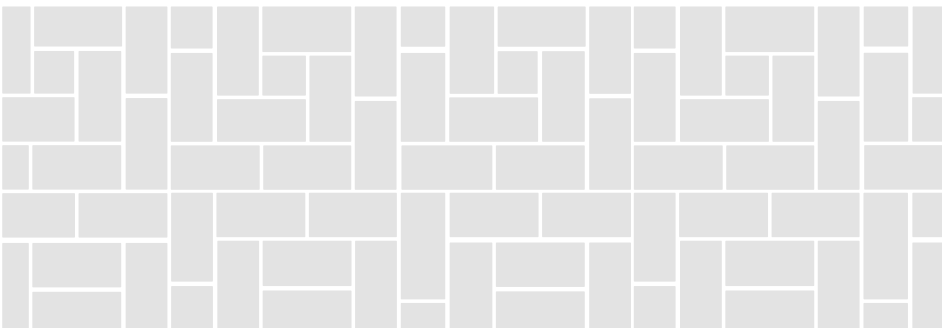
Laying mix



Laying mix



Middle stone bond



New products

Mediterran

200 x 100 x 45 mm	-
200 x 100 x 52 mm	●
200 x 100 x 62 mm	-
200 x 100 x 71 mm	-
200 x 100 x 80 mm Small chamfer, shortened spacers	-
240 x 118 x 71 mm	-
200 x 150 x 62 mm	-
292 x 71 x 52 mm	-
296 x 71 x 71 mm shortened spacers	-



Mix of Mediterran and Colima

200 x 100 x 45 mm	-
200 x 100 x 52 mm	●
200 x 100 x 62 mm	-
200 x 100 x 71 mm	-
200 x 100 x 80 mm Small chamfer, shortened spacers	-
240 x 118 x 71 mm	-
200 x 150 x 62 mm	-
292 x 71 x 52 mm	-
296 x 71 x 71 mm shortened spacers	-



New products

Riga antracite-black

200 x 100 x 45 mm	on request
200 x 100 x 52 mm	●
200 x 100 x 62 mm	on request
200 x 100 x 71 mm	on request
200 x 100 x 80 mm Small chamfer, shortened spacers	-
240 x 118 x 71 mm	-
240 x 78 x 52 mm	on request
200 x 150 x 62 mm	on request
292 x 71 x 52 mm	-
296 x 71 x 71 mm shortened spacers	-



Colour-/Format range

Colima beige-grey



Leather-coloured nuanced



Antique yellow coal



Copenhagen yellow coal



Formats

200 x 100 x 45 mm	●	on request	-	-
200 x 100 x 52 mm	●	●	on request	●
200 x 100 x 62 mm	on request	on request	on request	-
200 x 100 x 71 mm	on request	on request	on request	-
200 x 100 x 80 mm Small chamfer, shortened spacers	-	on request	-	-
240 x 118 x 52 mm	on request	on request	on request	-
240 x 118 x 62 mm	-	on request	on request	-
240 x 118 x 71 mm	-	-	-	-
200 x 150 x 62 mm	on request	on request	on request	-
300 x 150 x 62 mm	-	-	-	-
200 x 200 x 52 mm	-	-	-	-
200 x 200 x 62 mm	-	-	-	-
215 x 105 x 52 mm	-	on request	-	-
215 x 105 x 62 mm	-	on request	-	-
200 x 78 x 52 mm	on request	on request	on request	-
240 x 78 x 52 mm	on request	on request	on request	-
292 x 71 x 71 mm	-	-	-	on request
292 x 71 x 52 mm	on request	-	-	on request
296 x 71 x 71 mm shortened spacers	on request	-	-	on request


Formats

200 x 100 x 45 mm	-	-	on request	●	●
200 x 100 x 52 mm	●	on request	on request	●	●
200 x 100 x 62 mm	-	on request	on request	on request	on request
200 x 100 x 71 mm	-	on request	on request	on request	on request
200 x 100 x 80 mm Small chamfer, shortened spacers	-	-	-	on request	on request
240 x 118 x 52 mm	-	on request	-	●	-
240 x 118 x 62 mm	-	on request	on request	on request	-
240 x 118 x 71 mm	-	-	-	on request	-
200 x 150 x 62 mm	-	on request	on request	on request	on request
300 x 150 x 62 mm	-	-	-	-	-
200 x 200 x 52 mm	-	-	-	-	-
200 x 200 x 62 mm	-	-	-	on request	on request
215 x 105 x 52 mm	-	on request	on request	on request	-
215 x 105 x 62 mm	-	on request	on request	on request	-
200 x 78 x 52 mm	-	on request	on request	on request	on request
240 x 78 x 52 mm	-	on request	on request	on request	-
292 x 71 x 71 mm	-	-	-	-	-
292 x 71 x 52 mm	-	-	-	-	-
296 x 71 x 71 mm shortened spacers	-	-	-	-	-

Colour-/Format range



Formats

Formats	Gotland blue-brown smelted	Berlin blue-anthracite	Riga anthracite-black	Luna lava-grey	Atlantis anthracite-silver grey
200 x 100 x 45 mm	-	●	on request	on request	●
200 x 100 x 52 mm	●	●	●	●	●
200 x 100 x 62 mm	on request	on request	on request	on request	on request
200 x 100 x 71 mm	on request	on request	on request	on request	on request
200 x 100 x 80 mm Small chamfer, shortened spacers	-	on request	-	-	on request
240 x 118 x 52 mm	on request	●	on request	on request	on request
240 x 118 x 62 mm	on request	-	-	-	on request
240 x 118 x 71 mm	on request	-	-	-	-
200 x 150 x 62 mm	on request	on request	on request	on request	on request
300 x 150 x 62 mm	on request	on request	-	-	on request
200 x 200 x 52 mm	-	-	-	-	-
200 x 200 x 62 mm	-	-	-	-	-
215 x 105 x 52 mm	on request	on request	-	-	on request
215 x 105 x 62 mm	on request	on request	-	-	on request
200 x 78 x 52 mm	on request	on request	on request	on request	on request
240 x 78 x 52 mm	on request	on request	on request	on request	on request
292 x 71 x 71 mm	on request	-	on request	on request	on request
292 x 71 x 52 mm	●	-	-	-	-
296 x 71 x 71 mm shortened spacers	on request	on request	-	-	on request

Lübeck blue-brown flamed

Midnight blue

Gdansk dark red-anthracite

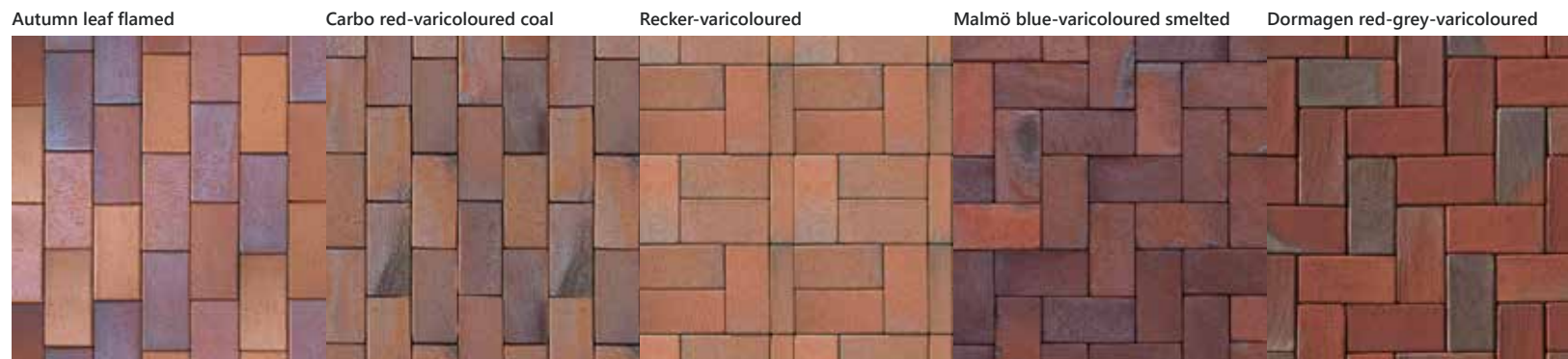
Opalblue flamed



Formats

200 x 100 x 45 mm	on request	-	on request	-
200 x 100 x 52 mm	on request	●	on request	on request
200 x 100 x 62 mm	on request	on request	on request	-
200 x 100 x 71 mm	on request	on request	on request	-
200 x 100 x 80 mm Small chamfer, shortened spacers	-	-	-	-
240 x 118 x 52 mm	-	●	on request	on request
240 x 118 x 62 mm	-	on request	-	on request
240 x 118 x 71 mm	-	on request	-	on request
200 x 150 x 62 mm	on request	on request	on request	on request
300 x 150 x 62 mm	on request	on request	-	-
200 x 200 x 52 mm	-	-	-	-
200 x 200 x 62 mm	-	-	-	-
215 x 105 x 52 mm	on request	on request	-	on request
215 x 105 x 62 mm	on request	on request	-	on request
200 x 78 x 52 mm	on request	on request	on request	on request
240 x 78 x 52 mm	on request	on request	on request	on request
292 x 71 x 71 mm	on request	on request	on request	-
292 x 71 x 52 mm	-	on request	-	-
296 x 71 x 71 mm shortened spacers	-	-	-	-

Colour-/Format range



Formats

200 x 100 x 45 mm	on request	-	●	-	on request
200 x 100 x 52 mm	on request	on request	●	●	on request
200 x 100 x 62 mm	on request	on request	on request	on request	on request
200 x 100 x 71 mm	on request	on request	on request	on request	on request
200 x 100 x 80 mm Small chamfer, shortened spacers	-	-	on request	on request	-
240 x 118 x 52 mm	on request	on request	●	on request	on request
240 x 118 x 62 mm	on request	on request	-	on request	-
240 x 118 x 71 mm	-	on request	-	on request	-
200 x 150 x 62 mm	on request	on request	on request	on request	on request
300 x 150 x 62 mm	-	-	on request	on request	-
200 x 200 x 52 mm	-	-	on request	-	-
200 x 200 x 62 mm	-	-	on request	-	-
215 x 105 x 52 mm	on request	on request	on request	on request	-
215 x 105 x 62 mm	on request	on request	on request	on request	-
200 x 78 x 52 mm	on request	on request	on request	on request	on request
240 x 78 x 52 mm	on request	on request	on request	on request	on request
292 x 71 x 71 mm	-	-	-	on request	-
292 x 71 x 52 mm	-	-	on request	●	-
296 x 71 x 71 mm shortened spacers	-	-	-	on request	-



Formats

200 x 100 x 45 mm		on request	-	-	●
200 x 100 x 52 mm	●	●	●	on request	●
200 x 100 x 62 mm	-	on request	on request	on request	on request
200 x 100 x 71 mm	-	on request	on request	on request	on request
200 x 100 x 80 mm Small chamfer, shortened spacers	-	-	-	-	on request
240 x 118 x 52 mm	-	on request	●	on request	●
240 x 118 x 62 mm	-	-	on request	on request	on request
240 x 118 x 71 mm	-	-	on request	on request	on request
200 x 150 x 62 mm	-	on request	on request	on request	on request
300 x 150 x 62 mm	-	-	-	-	on request
200 x 200 x 52 mm	-	-	-	-	-
200 x 200 x 62 mm	-	-	-	-	on request
215 x 105 x 52 mm	-	-	on request	on request	on request
215 x 105 x 62 mm	-	-	on request	on request	on request
200 x 78 x 52 mm	-	on request	on request	on request	on request
240 x 78 x 52 mm	-	on request	on request	on request	on request
292 x 71 x 71 mm	-	-	-	-	-
292 x 71 x 52 mm	-	-	-	-	on request
296 x 71 x 71 mm shortened spacers	-	-	-	-	on request

Our product range



Facing bricks



Brick strips



circular brick facade



Clay pavers



Clinker roof tiles



Floor ceramics



VEA-INITIATIVE
Klimafreundlicher
Mittelstand



DIN EN 771-1
(DIN V 20000-401)
DIN 4051
DIN EN 1344



Headquarter

ABC-Klinkergruppe
Grüner Weg 8 · D-49509 Recke
Tel. +49 (0) 54 53 / 93 33 0
abc@abc-klinker.de · www.abc-klinker.de

Klinker- und Keramikwerke · A. Berentelg & Co. KG

Klinkerwerk Hörstel

Dornierstraße 11 · D-48477 Hörstel
Phone +49 (0) 54 59 / 93 43 0
Show room „Ringofen“ in the Plant
Tel. +49 (0) 54 59 / 93 43 11

Klinker- und Keramikwerke · A. Berentelg & Co. KG

Klinkerwerk Schüttorf

An der Ziegelei 6 · D-48465 Schüttorf
Phone +49 (0) 59 23 / 96 00 0

Recker Ziegelwerk · Berentelg & Hebrok OHG

Mettinger Straße 135 · D-49509 Recke
Phone +49 (0) 54 53 / 9 30 50

Hollager Ziegelwerk · Berentelg & Hebrok GmbH & Co. KG

Hollager Straße 106 · D-49134 Wallenhorst-Hollage
Phone +49 (0) 54 07 / 8 30 40

KDW-Klinkerdachziegelwerk · GmbH & Co. KG

Ziegeleiweg 1b · D-49170 Natrup-Hagen
Phone +49 (0) 54 05 / 6 19 19 60

ABC-Keramik · H & R Berentelg GmbH & Co. KG

Industriestraße 10 · D-49492 Westerkappeln
Phone +49 (0) 54 56 / 93 47 0

