

ABC-NORDIC[®]

with heat exchanger

ABC KERAMIK
BERENTELG





Terhalle

ABC-NORDIC® Rostrot | Innovation house Terhalle Holzbau, Ahaus, Zimmerei Lübben, Garrel

About us

The ABC Clinker Group

We, the ABC Clinker Group, are a family-owned business in the brick and tile industry located in Germany. We look back on around 130 years of experience. Our product range is based on one of humans' oldest natural building materials - the clay.

Today, our ABC Clinker Group is in the sixth generation and manufactures various brick products at six locations in Germany. Our product portfolio includes facing bricks, brick strips, clay pavers, clinker roof tiles and floor ceramics.

Sustainability

We produce sustainable natural building materials as environmentally friendly as possible. For this reason, we focus on low energy consumption in production with gentle, efficient use of resources and low material consumption.

The natural slate clay of the Tecklenburger Land forms the basic material of our ABC products - a valuable, genuine natural product!

In this context, we follow the "Cradle to Cradle" concept, which ensures that all substances produced in biological and technical cycles serve for subsequent cycles. This explains the meaning of cradle to cradle. Products are managed in a closed cycle from their creation to the end of their life cycle. After their use are 100% reused for the development of the next product.

Innovation

The renaissance of bricks has shown that the brick as a building material has again successfully adapted to the new requirements and tasks of its time - that is why we are already working today on the brick products of tomorrow.



About ABC-NORDIC[®]

| Ceramic System

The ceramic system ABC-NORDIC is a homogeneous, durable "brick tank" with traditional material in a modern brick design. It is light and easy to use. ABC-NORDIC is quick to process, durable and suitable for renovations and new buildings.

It combines the materiality of the facade and the roof so that the buildings appear to have been cast in one piece.

- open to diffusion
- graffiti-resistant
- recyclable
- made from natural materials
- available in different colours and formats

| Product features



frost-resistant



environmentally friendly



water absorption $\leq 6\%$



colourfast



weatherproof



fire behavior: euroclass A1



standardized

| Formats

Length	400 mm
Width	175 mm
Height	30 mm
Material thickness	approx. 15 mm
Weight	approx. 2,8 kg
Lath spacing	approx. 140 mm*
Piece per m ²	approx. 18 pieces

Length	400 mm
Width	250 mm
Height	30 mm
Material thickness	approx. 15 mm
Weight	approx. 3,7 kg
Lath spacing	approx. 215 mm*
Piece per m ²	approx. 11,75 pieces

Further formats on request.
The correct lath spacing must be determined at the construction site.
Screw holes must be sufficiently covered.

1

2

3

4

5

ABC-Graffiti-Remover

ABC-NORDIC® IS GRAFFITI REMOVABLE

Unsightly graffiti can be easily removed by the ABC-NORDIC® with the ABC graffiti remover. Graffiti has become part of the appearance of our cities and communities, but it is rarely welcome. On the one hand, it rarely meets the aesthetic taste of the house wall owners, on the other hand, its removal is usually very cost-intensive. Although the mostly nocturnal spraying activities can hardly be prevented, the selection of the building material for the outer wall can at least ensure that it disappears as quickly as it came.

Thanks to the extremely high firing temperatures in the manufacturing process, ABC-NORDIC® has a surface that reliably prevents the penetration of colors of all kinds. This means that graffiti remains only on the surface and can be removed quickly and effortlessly above all without residue with the ABC graffiti remover.



Caldera



Loogsand



Variations in colour, play of colours and proportions may be possible due to production/printing reasons.

Colours

Rostrot



Fehmarn



Vulcano



Narvik



Variations in colour, play of colours and proportions may be possible due to production/printing reasons.

Colours

| Tromsø



| Trondheim



| Corton

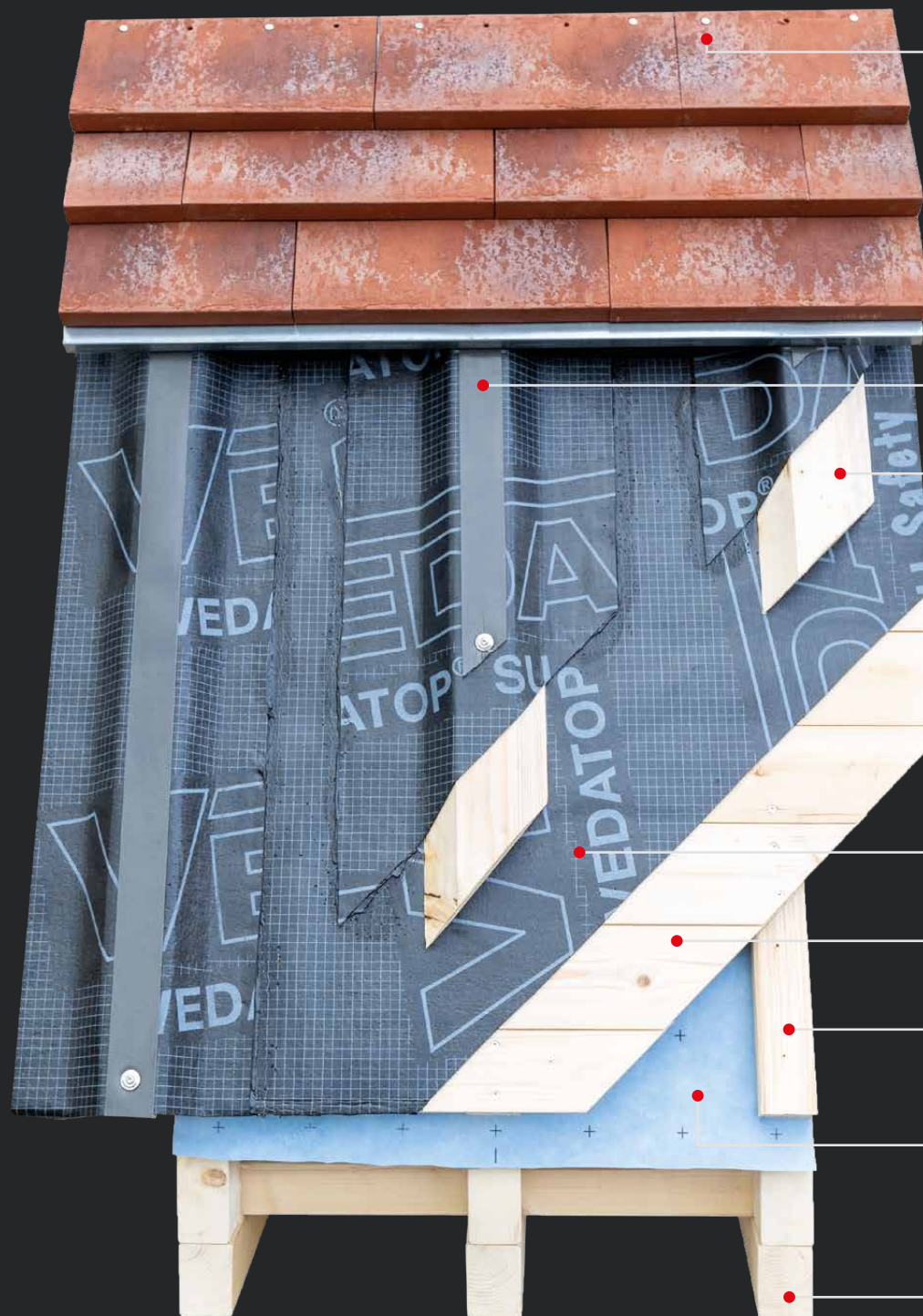


Variations in colour, play of colours and proportions may be possible due to production/printing reasons.



www.bof-architekten.de

Variations in colour, play of colours and proportions may be possible due to production/printing reasons.



Variant of construction

- 1 Stainless steel countersunk-head screw
4.5 / 45 mm
- 2 Nail sealing tape
- 3 Wedge plank
- 4 Waterproof sealing
- 5 Wooden lagging
- 6 Counter battens
- 7 Roof membrane
- 8 Timber rafter

The photos are intended as a suggestion.
We are not liable for the installation of ABC-NORDIC®.

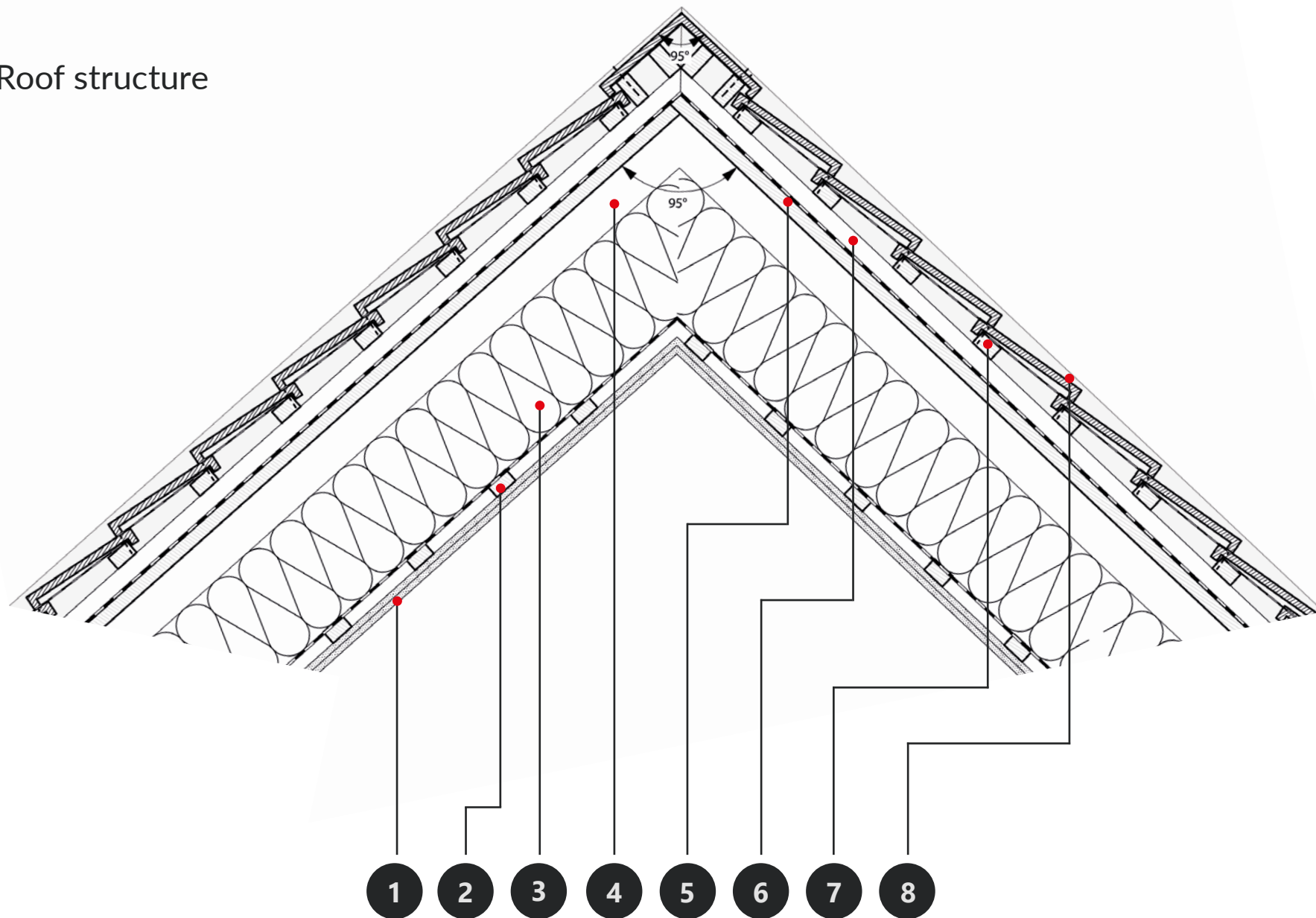


| Variant of construction

- 1 Asphalttreated chipboard | Celit 4D, ISOPROC
- 2 Counter battens / installing with wire pins
- 3 Delta barrier film 17.5 / 25 cm

The photos are intended as a suggestion.
We are not liable for the installation of ABC-NORDIC®.

Roof structure



Roof structure

- 1 Gypsum plasterboard
- 2 Battens
- 3 Thermal insulation
- 4 Timber rafter
- 5 Wooden cladding and waterproof sealing (Delta barrier film)
- 6 Trapezoidal sheet with waterproof sealing and Nail sealing tape/air gap
- 7 Battens
- 8 ABC-NORDIC® tile



Ridge tile

The photos are intended as a suggestion.
We are not liable for the installation of ABC-NORDIC®.

ABC-NORDIC® tile

Front view



Details

Side view



Ridge tile



The photos are intended as a suggestion. We are not liable for the installation of ABC-NORDIC®.

ABC-NORDIC®

with heat exchanger

Ceramic is a highly efficient thermal mass storage device. In order to use the energy generated from the facade, a pipeline on the back of the Nordic is pressed into the ceramic socket. Due to the natural sunlight, the liquid in the hose is heated up to 65 degrees.

The available energy can now be collected directly in a buffer storage tank or used for heating or hot water via the heat pump. The pipeline runs invisibly in the ceramic and therefore does not require surface cleaning.





The photos are intended as a suggestion.
We are not liable for the installation of ABC-NORDIC®.

Details

| Interior corner



| External corner blunt



| External corner pointed



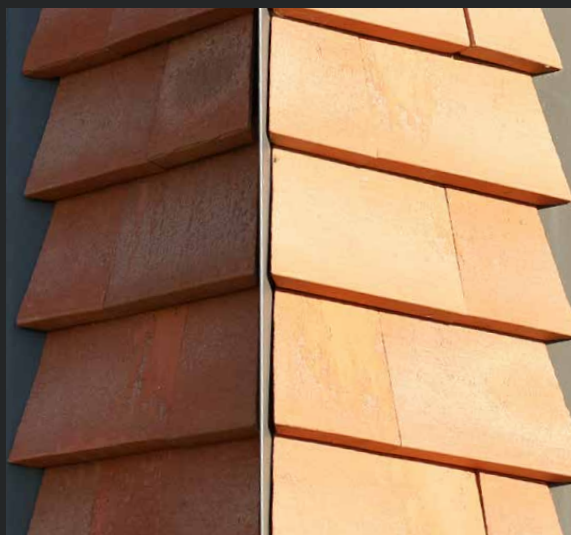
| Box gutter projected



| Interior gutter



| Pillar view



| Window sill



| Drainage in the ground base



The photos are intended as a suggestion. We are not liable for the installation of ABC-NORDIC®.

Details

| Straight cut



| Snow guard



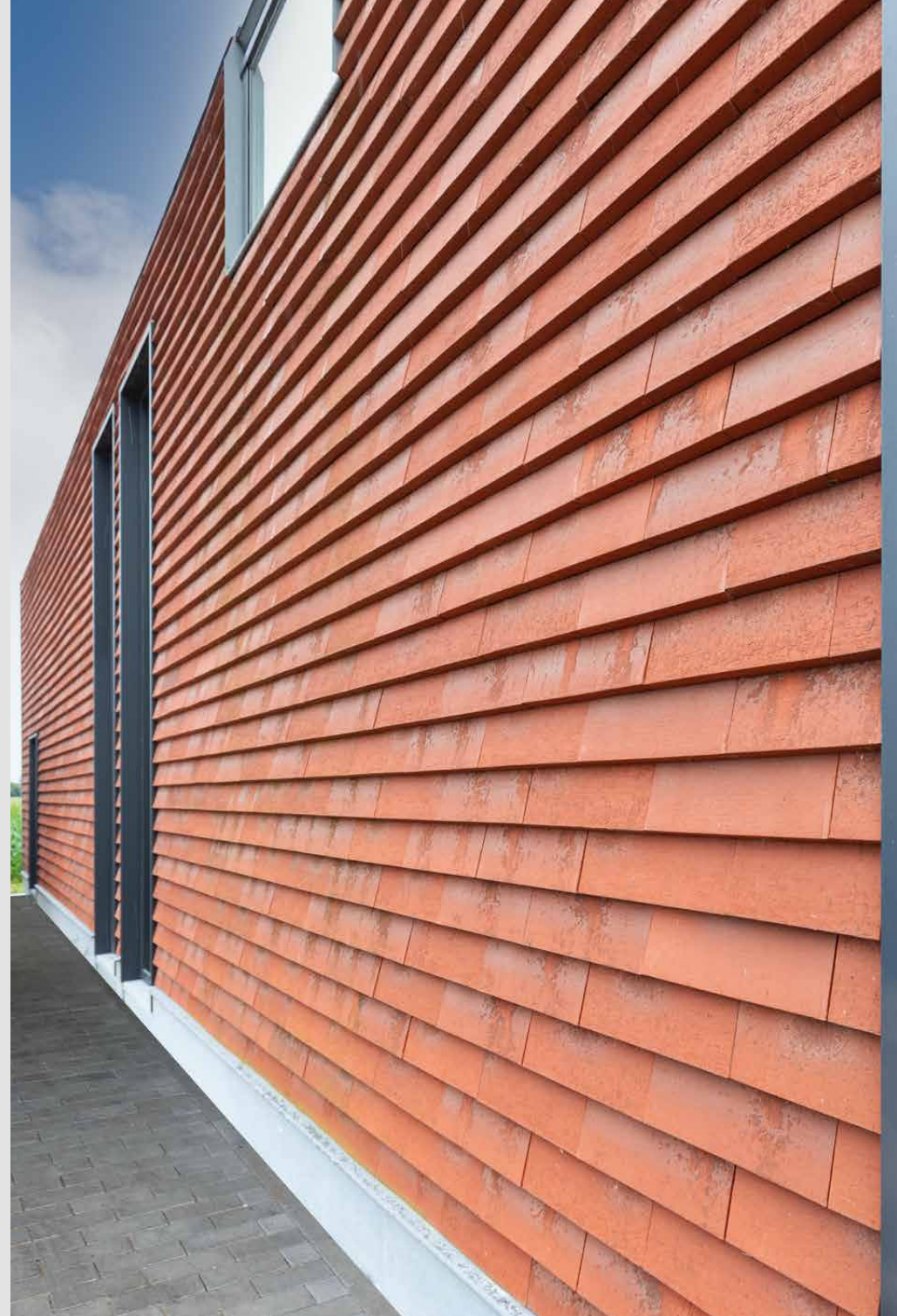
Assembly



The photos are intended as a suggestion. We are not liable for the installation of ABC-NORDIC®.



ABC-NORDIC® Rostrot | Family house Nieuwmunster, Belgium



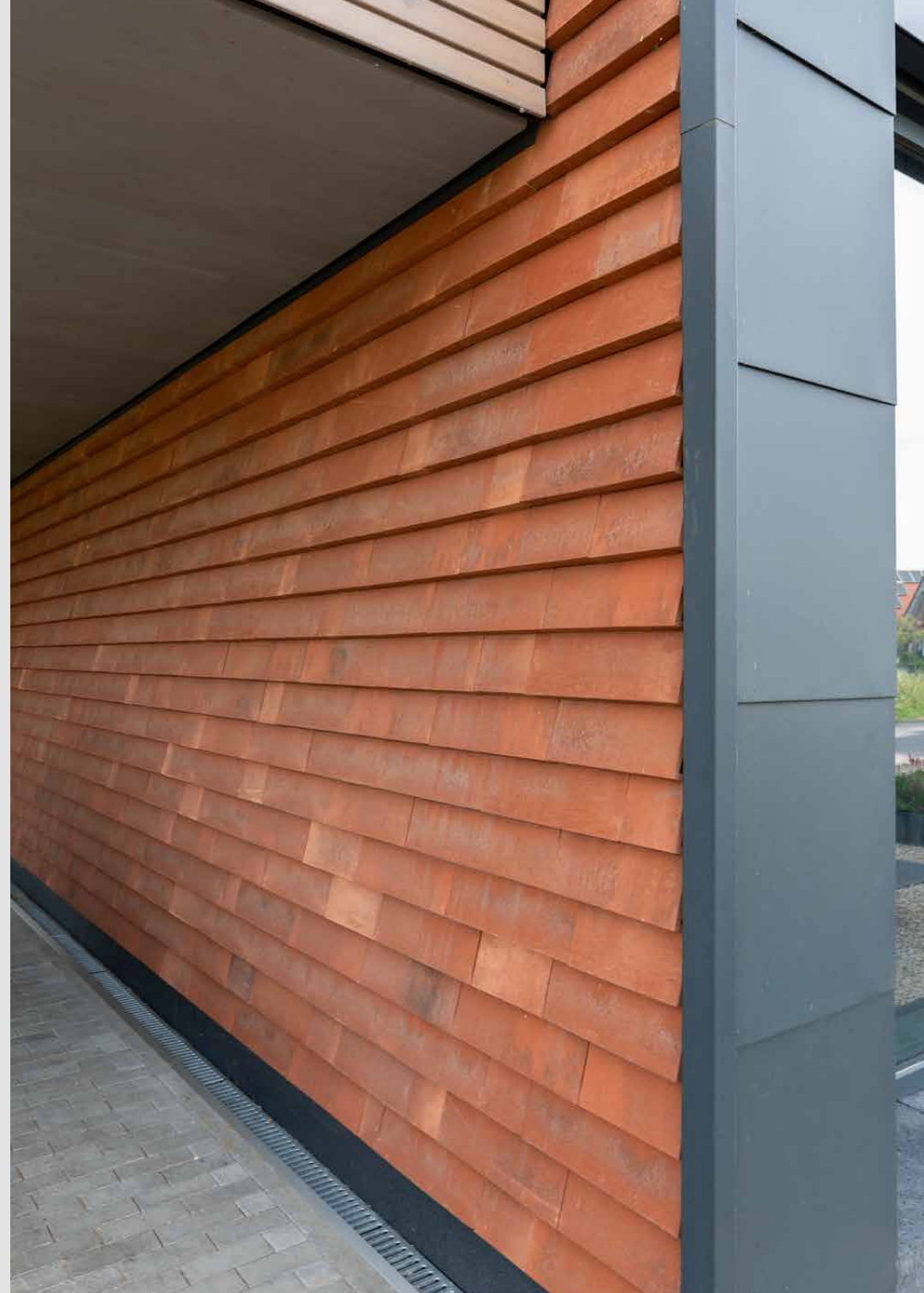


ABC-NORDIC® Caldera | Family house Zandvoort, Netherlands





ABC-NORDIC® Rostrot | Innovation house Terhalle Holzbau, Ahaus





ABC-NORDIC® special colour | Museum in Syke | Freitag Hartmann Architekten | Photo: Eugen Eslage





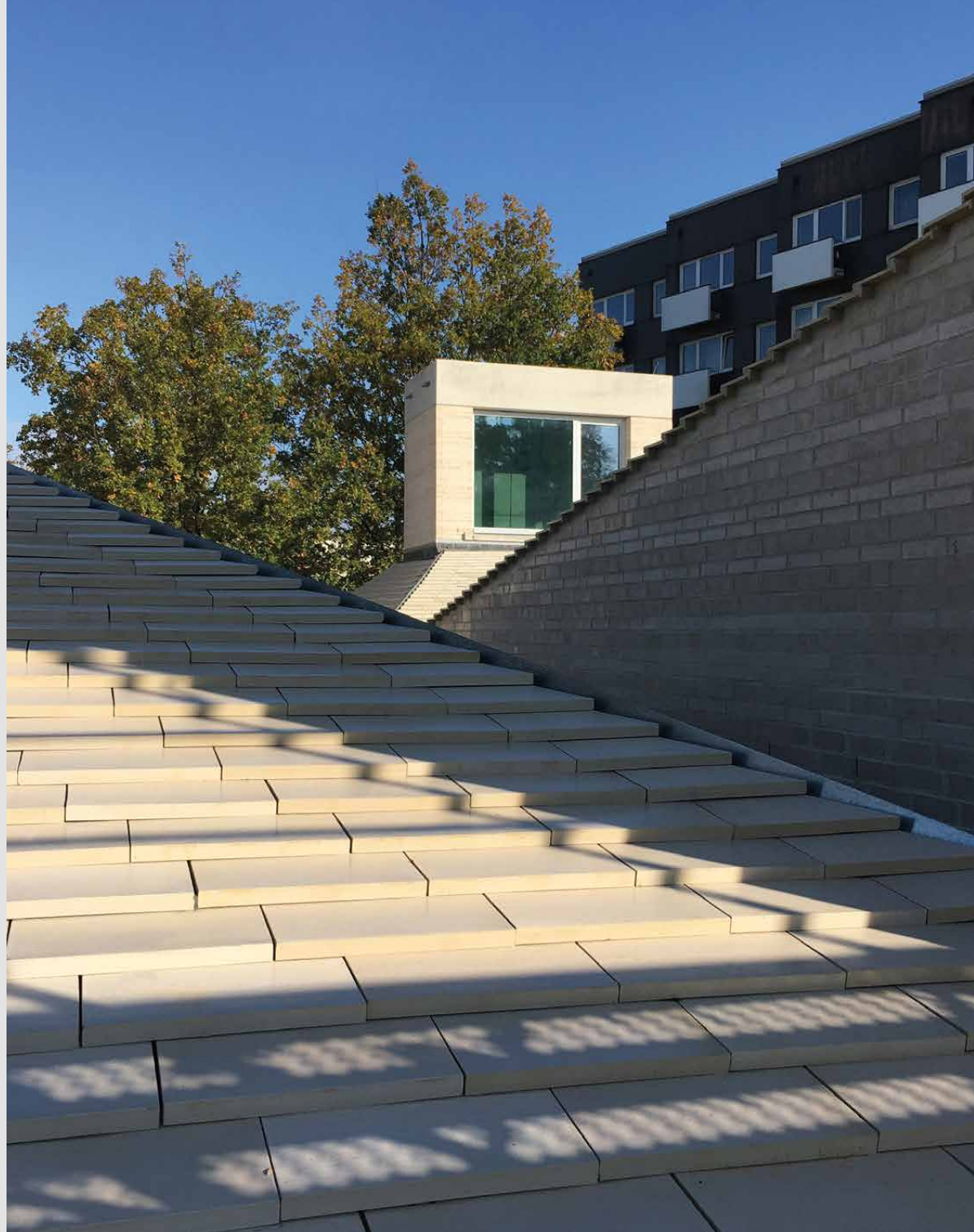
ABC-NORDIC® special colour | Museum in Syke | Freitag Hartmann Architekten | Photo: Eugen Eslage



Photo: Eugen Eslage



ABC-NORDIC® Caldera | District centre Honnover-Stöcken





ROBEO GmbH



Our product range



Facing bricks



Brick slips



NORDIC



Clay pavers



Clinker roof tiles



Floor ceramics



DIN EN 771-1
(DIN V 20000-401)
DIN 4051
DIN EN 1344



Brochures for download



Production plants of the ABC-Klinkergruppe



Headquarter

ABC-Klinkergruppe
Grüner Weg 8 · D-49509 Recke
Tel. +49 (0) 54 53 / 93 33 0
abc@abc-klinker.de · www.abc-klinker.de

Klinker- und Keramikwerke · A. Berentelg & Co. KG

Klinkerwerk Hörstel

Dornierstraße 11 · D-48477 Hörstel
Phone +49 (0) 54 59 / 93 43 0
Show room „Ringofen“ in the Plant
Tel. +49 (0) 54 59 / 93 43 11

Klinker- und Keramikwerke · A. Berentelg & Co. KG

Klinkerwerk Schüttorf

An der Ziegelei 6 · D-48465 Schüttorf
Phone +49 (0) 59 23 / 96 00 0

Recker Ziegelwerk · Berentelg & Hebrok OHG

Mettinger Straße 135 · D-49509 Recke
Phone +49 (0) 54 53 / 9 30 50

Hollager Ziegelwerk · Berentelg & Hebrok GmbH & Co. KG

Hollager Straße 106 · D-49134 Wallenhorst-Hollage
Phone +49 (0) 54 07 / 8 30 40

KDW-Klinkerdachziegelwerk · GmbH & Co. KG

Ziegeleiweg 1b · D-49170 Natrup-Hagen
Phone +49 (0) 54 05 / 6 19 19 60

ABC-Keramik · H & R Berentelg GmbH & Co. KG

Industriestraße 10 · D-49492 Westerkappeln
Phone +49 (0) 54 56 / 93 47 0

